



Robert L. Barchi, President

September 16, 2013

Fellow New Jerseyans:

On behalf of Rutgers, The State University of New Jersey, I am happy to submit our 2013 Institutional Profile Report, in keeping with our obligation to share timely and accurate data about our educational and administrative operations.

Rutgers, founded in 1766 and rapidly approaching its 250th anniversary, remains dedicated to fulfilling our mission of teaching, research, and service to New Jersey. A member of the prestigious Association of American Universities since 1989, Rutgers takes pride in the excellence and research achievements of our faculty, the success of our students in earning international fellowships and scholarships, the award-winning innovations of our staff, and the considerable contributions our 400,000 alumni make to our state and the world.

This Institutional Profile Report provides valuable information and reflects our continuing commitment to New Jersey and its citizens.

Sincerely yours,

Robert L. Barchi



Institutional Profile Report
2013

Rutgers, The State University of New Jersey

Institutional Profile Report – 2013

Table of Contents

<i>Introduction and Accreditation Status</i>	<i>Section A</i>
<i>Students Served</i>	<i>Section B</i>
<i>Characteristics of Undergraduate Students</i>	<i>Section C</i>
<i>Student Outcomes</i>	<i>Section D</i>
<i>Faculty Characteristics</i>	<i>Section E</i>
<i>Characteristics of the Governors and Trustees</i>	<i>Section F</i>
<i>Profile of the Institution - Degree Programs</i>	<i>Section G</i>
<i>Major Research and Public Service Activities</i>	<i>Section H</i>
<i>Major Capital Projects</i>	<i>Section I</i>

Rutgers, The State University of New Jersey

Institutional Profile Report

Section A

Introduction and Accreditation Status


MIDDLE STATES COMMISSION ON HIGHER EDUCATION

 3624 Market Street, Philadelphia, PA 19104-2680. Tel: 267-284-5000. Fax: 215-662-5501
www.msche.org
STATEMENT OF ACCREDITATION STATUS
RUTGERS, THE STATE UNIVERSITY OF NEW JERSEY
Old Queens Building
New Brunswick, NJ 08901
Phone: (732) 445-4636; Fax: (732) 932-8060
www.rutgers.edu
Chief Executive Officer: Dr. Robert L. Barchi, M.D., Ph.D., President

INSTITUTIONAL INFORMATION

Enrollment (Headcount):	43967 Undergraduate; 14821 Graduate
Control:	Public
Affiliation:	State
Carnegie Classification:	Research - Very High Research Activity
Degrees Offered:	Bachelor's, Master's, Doctor's - Professional Practice, Doctor's - Research/Scholarship;
Distance Education Programs:	Yes

Accreditors Approved by U.S. Secretary of Education: Academy of Nutrition and Dietetics, Accreditation Council for Education in Nutrition and Dietetics; Accreditation Council for Pharmacy Education; American Bar Association, Council of the Section of Legal Education and Admissions to the Bar; American Physical Therapy Association, Commission on Accreditation in Physical Therapy Education; American Psychological Association, Commission on Accreditation; Commission on Collegiate Nursing Education; Council on Education for Public Health; National Association of Schools of Dance, Commission on Accreditation; National Association of Schools of Music, Commission on Accreditation; Teacher Education Accreditation Council, Accreditation Committee

Other Accreditors: AACSB International - The Association to Advance Collegiate Schools of Business; Accreditation Board for Engineering and Technology (ABET); American Chemical Society; American Library Association; American Society of Landscape Architects; Association of American Law Schools; Council for Accreditation of Counseling and Related Educational Programs; Council on Social Work Education; National Association of Schools of Public Affairs and Administration; Planning Accreditation Board.

Instructional Locations
Branch Campuses: None

Additional Locations: 65 Bergen Street, Newark, NJ; Atlantic Cape Community College, Atlantic City, NJ; Atlantic Cape Community College, Mays Landing, NJ; Burlington County College, Mount Laurel, NJ; Camden Campus, Camden, NJ; Camden County Boathouse, Pennsauken, NJ; CCM, Headquarters Plaza, Morristown, NJ; Central University of Finance

and Economics, 39 South College Road, China; Dalian University of Technology, International Conference Center, Dalian, China; Educational Testing Service, Princeton, NJ; Harborside Financial Center, Jersey City, NJ; National Library of Singapore, 100 Victoria Street, Singapore; Neptune Township School District, Neptune, NJ; Newark Campus, Newark, NJ; Newark City Hall, Newark, NJ; PHH Training Center, Mount Laurel, NJ; Plaza Business Centre, Shanghai, China; Plaza Conference Centre, Beijing, China; Raritan Valley Community College, North Branch, NJ; Rider University, Lawrenceville, NJ; Scotch Plain, Scotch Plain, NJ; Sheraton Atlantic City Convention Center Hotel, Atlantic City, NJ; Stratford, Stratford, NJ; Western Monmouth Higher Education Center, Freehold, NJ; Wyndham Princeton Forrestal Hotel & Conference Center, Plainsboro, NJ

Other Instructional Sites: American Red Cross, Fairfield, NJ; Auten Road School, Hillsborough, NJ; Camden County College, Blackwood, NJ; Centenary College Equestrian Center, Long Valley, NJ; Cherry Hill Library, Cherry Hill, NJ; Cumberland County College, Vineland, NJ; Drew University, Madison, NJ; Eastern Regional High School, Voorhees, NJ; Haddonfield High School, Haddonfield, NJ; Highland Park, Highland Park, NJ; Joint Base McGuire-Dix-Lakehurst, Joint Base McGuire-Dix-Lakehurst, NJ; Kearny, Kearny, NJ; McNair High School, Jersey City, NJ; Merrill Lynch, Somerset, NJ; Middlesex Regional Commission, Piscataway, NJ; Octagon 10 Office Center, Parsippany, NJ; Picatinny, Dover, NJ; Porzio, Bromberg, and Newman, Morristown, NJ; Ridgefield Park Sr. High School, Ridgefield, NJ; Rutgers EcoComplex, Bordentown, NJ; Steininger Behavioral Care Services, Cherry Hill, NJ; Trinitas Hospital, New Point Campus, Elizabeth, NJ; UMDNJ Clinical Academic Building, New Brunswick, NJ

ACCREDITATION INFORMATION

Status: Member since 1921

Last Reaffirmed: June 26, 2008

Most Recent Commission Action:

March 7, 2013: To acknowledge the complex substantive change request and to include within the scope of the institution's accreditation the following changes: 1) the change in the established mission of the institution to incorporate the medical and health-related academic programs transferred to Rutgers University from the University of Medicine and Dentistry of New Jersey by The New Jersey Medical and Health Sciences Education Restructuring Act, viz., the programs offered by the Graduate School of Biomedical Sciences, New Jersey Dental School, New Jersey Medical School, Robert Wood Johnson Medical School, School of Public Health, School of Health Related Professions, School of Nursing, University Behavioral HealthCare and Cancer Institute of New Jersey with the programs of the New Jersey Medical School, New Jersey Dental School, School of Nursing, and School of Health Related Professions included provisionally pending an affiliation agreement between Rutgers University and University Hospital to continue the latter's support of these schools' academic missions; 2) changes in the governance structure of the University to include a new board of directors for Rutgers-Camden, advisory boards for Rutgers-New Brunswick and Rutgers-Newark, and a joint board of governors for Rutgers-Camden and Rowan University; 3) the offering of the MD and DMD degrees and associate's degrees offered by the School of Nursing and the School of Health Related Professions, provisionally, pending approval by the

Secretary of Higher Education of the State of New Jersey; and 4) additional locations at 40 East Laurel Road, Stratford, NJ 08084 and 1776 Raritan Road, Scotch Plains, NJ 07076. To request a monitoring report, due December 1, 2014, documenting evidence of 1) the completion and implementation of debt refinancing plans, including the financing of University Hospital debt (Standard 3); 2) State funding of University Hospital to ensure the integrity of the clinical and educational programs held there (Standard 3); 3) five-year financial forecasts related to a new strategic plan and including costs of IT integration (Standards 2 and 3); 4) the development and implementation of a long-term strategy for capital reinvestment to address critical deferred maintenance needs related to equipment and facilities transferred from UMDNJ to Rutgers (Standards 2 and 3); 5) further development and implementation of new governance structures (Standard 4); 6) the alignment of policies and procedures for faculty and staff, including those subject to negotiated agreements (Standards 4, 5 and 6). A small team visit will follow. The Periodic Review Report is due June 1, 2013.

Brief History Since Last Comprehensive Evaluation:

- June 26, 2008: To reaffirm accreditation. The Periodic Review Report is due June 1, 2013.
- November 4, 2009: To acknowledge receipt of the substantive change request and to include the following additional location within the scope of the institution's accreditation: Neptune Township School District, 60 Neptune Boulevard, Neptune, NJ 07753. The Periodic Review Report is due June 1, 2013.
- May 5, 2011: To acknowledge receipt of the substantive change request and to include the additional location at Raritan Valley Community College, 118 Lamington Rd., North Branch, NJ 08876 within the scope of the institution's accreditation. The Periodic Review Report is due June 1, 2013.
- June 28, 2011: To acknowledge receipt of the substantive change request and to include the additional location at Camden County Boathouse, 7050 North Park Drive, Pennsauken, NJ 08109 within the scope of the institution's accreditation. The Periodic Review Report is due June 1, 2013.
- November 1, 2011: To acknowledge receipt of the substantive change request and to re-classify the instructional site at Burlington County College, 3331 Route 38, Mount Laurel, NJ 08054 as an additional location and to include the location within the scope of the institution's accreditation. The Periodic Review Report is due June 1, 2013.
- August 27, 2012: To acknowledge receipt of the substantive change request and to include the additional location at the Sheraton Atlantic City Convention Center Hotel, Two Convention Boulevard, Atlantic City, NJ 08401 within the scope of the institution's accreditation. The Commission requires written notification within thirty days of the commencement of operations at these additional locations. In the event that operations at the additional location do not commence within one calendar year from the approval of this action, approval will lapse. The Periodic Review Report is due June 1, 2013.

Next Self-Study Evaluation: 2017 - 2018

Next Periodic Review Report: 2013**Date Printed:** August 15, 2013**DEFINITIONS**

Branch Campus - A location of an institution that is geographically apart and independent of the main campus of the institution. The location is independent if the location: offers courses in educational programs leading to a degree, certificate, or other recognized educational credential; has its own faculty and administrative or supervisory organization; and has its own budgetary and hiring authority.

Additional Location - A location, other than a branch campus, that is geographically apart from the main campus and at which the institution offers at least 50 percent of an educational program. **ANYA** ("Approved but Not Yet Active") indicates that the location is included within the scope of accreditation but has not yet begun to offer courses. This designation is removed after the Commission receives notification that courses have begun at this location.

Other Instructional Sites - A location, other than a branch campus or additional location, at which the institution offers one or more courses for credit.

Distance Education Programs - Yes or No indicates whether or not the institution has been approved to offer one or more degree or certificate/diploma programs for which students could meet 50% or more of their requirements by taking distance education courses.

EXPLANATION OF COMMISSION ACTIONS

An institution's accreditation continues unless it is explicitly suspended or removed. In addition to reviewing the institution's accreditation status at least every 5 years, actions are taken for substantive changes (such as a new degree or geographic site, or a change of ownership) or when other events occur that require review for continued compliance. Any type of report or visit required by the Commission is reviewed and voted on by the Commission after it is completed.

In increasing order of seriousness, a report by an institution to the Commission may be accepted, acknowledged, or rejected.

Levels of Actions:

Grant or Re-Affirm Accreditation without follow-up

Defer a decision on initial accreditation: The institution shows promise but the evaluation team has identified issues of concern and recommends that the institution be given a specified time period to address those concerns.

Postpone a decision on (reaffirmation of) accreditation: The Commission has determined that there is insufficient information to substantiate institutional compliance with one or more standards.

Continue accreditation: A delay of up to one year may be granted to ensure a current and accurate representation of the institution or in the event of circumstances beyond the institution's control (natural disaster, U.S. State Department travel warnings, etc.)

Recommendations to be addressed in the next Periodic Review Report: Suggestions for improvement are given, but no follow-up is needed for compliance.

Supplemental Information Report: This is required when a decision is postponed and are intended only to allow the institution to provide further information, not to give the institution time to formulate plans or initiate remedial action.

Progress report: The Commission needs assurance that the institution is carrying out activities that were planned or were being implemented at the time of a report or on-site visit.

Monitoring report: There is a potential for the institution to become non-compliant with MSCHE standards; issues are more complex or more numerous; or issues require a substantive, detailed report. A visit may or may not be required.

Warning: The Commission acts to Warn an institution that its accreditation may be in jeopardy when the institution is not in compliance with one or more Commission standards and a follow-up report, called a monitoring report, is required to demonstrate that the institution has made appropriate improvements to bring itself into compliance. Warning indicates that the Commission believes that, although the institution is out of compliance, the institution has the capacity to make appropriate improvements within a reasonable period of time and the institution has the capacity to sustain itself in the long term.

Probation: The Commission places an institution on Probation when, in the Commission's judgment, the institution is not in compliance with one or more Commission standards and that the non-compliance is sufficiently serious, extensive, or acute that it raises concern about one or more of the following:

1. the adequacy of the education provided by the institution;
2. the institution's capacity to make appropriate improvements in a timely fashion; or
3. the institution's capacity to sustain itself in the long term.

Probation is often, but need not always be, preceded by an action of Warning or Postponement. If the Commission had previously postponed a decision or placed the institution on Warning, the Commission may place the institution on Probation if it determines that the institution has failed to address satisfactorily the Commission's concerns in the prior action of postponement or warning regarding compliance with Commission standards. This action is accompanied by a request for a monitoring report, and a special visit follows. Probation may, but need not always, precede an action of Show Cause.

Suspend accreditation: Accreditation has been Continued for one year and an appropriate evaluation is not possible. This is a procedural action that would result in Removal of Accreditation if accreditation cannot be reaffirmed within the period of suspension.

Show cause why the institution's accreditation should not be removed: The institution is required to present its case for accreditation by means of a substantive report and/or an on-site evaluation. A "Public Disclosure Statement" is issued by the Commission.

Remove accreditation. If the institution appeals this action, its accreditation remains in effect until the appeal is completed.

Other actions are described in the Commission policy, "Range of Commission Actions on Accreditation."

Rutgers, The State University of New Jersey

General Background

Chartered in 1766 as Queen’s College, Rutgers, The State University of New Jersey, is the eighth oldest institution of higher learning in the United States. It has a unique history: from its inception as one of the nation’s nine colonial colleges, Rutgers grew to become the land-grant college of New Jersey in 1864, and to assume full university status in 1924. Legislative acts of 1945 and 1956 designating it “The State University of New Jersey” qualified it as the youngest of the nation’s major public research universities. The University of Newark merged with Rutgers in 1946, and the College of South Jersey in Camden joined in 1950. All of the university’s property and educational facilities are imparted with a public trust for higher education of the people of the State.

In the short span of several decades, Rutgers transformed from a disparate collection of schools, geographically dispersed and operating largely independently, into the ranks of the most prestigious educational institutions. That advancement was recognized in 1989 when Rutgers was invited to join the Association of American Universities (AAU). Dedicated to a threefold mission, Rutgers is equally committed to excellence in teaching, scholarship, and public service. Driving all of Rutgers’ activities is the defining characteristic of a premier research university: the continuous and vigorous creation of intellectual capital—the new discoveries and insights that drive the advancement of human knowledge and contribute to the improvement of the human condition. The very same intellectual and physical resources that distinguish Rutgers as a comprehensive research university that creates and advances knowledge enable it to provide the kind of education that best prepares its undergraduates to participate in and contribute to today’s intricate and fast-changing, knowledge-intensive world.

The New Jersey Medical and Health Sciences Education Restructuring Act, passed by the New Jersey Senate and Assembly on June 28, 2012, and signed by Governor Chris Christie on August 22, 2012, integrates all units of the University of Medicine and Dentistry of New Jersey, except University Hospital in Newark and the School of Osteopathic Medicine in Stratford, into Rutgers effective July 1, 2013. As required by the 1956 Rutgers Law, the legislation needed approval of both the Rutgers Board of Governors and Rutgers Board of Trustees. Both boards approved the integration of Rutgers and UMDNJ at their November 19, 2012, meeting. Twelve functional teams with members from both universities began working to ensure a smooth operational integration.

University Mission

As New Jersey’s sole comprehensive public research university, Rutgers, The State University of New Jersey, has the threefold mission of:

- providing for the instructional needs of New Jersey’s citizens through its undergraduate, graduate, and continuing education programs;
- conducting the cutting-edge research that contributes to the medical, environmental, social, and cultural well-being of the state, as well as aiding the economy and the state’s businesses and industries; and

- performing public service in support of the needs of the citizens of the state and its local, county, and state governments.

Each component of the university's mission reinforces and supports the other two. For example, research creates the new knowledge so necessary to support quality instruction and innovative public service. The mission of the university is accomplished through its three regional campuses (Camden, Newark, and New Brunswick) and the New Jersey Agricultural Experiment Station, which complement and support each other, permitting the most effective use of state resources.

University Campuses and Academic Structure

New Brunswick is the birthplace of Rutgers and is home to the university's largest campus. The New Brunswick Campus actually comprises five smaller campuses, each reflecting the university's historical evolution: the College Avenue Campus in New Brunswick (74 acres)—the site of Rutgers College, as original Queen's College was renamed in 1825; the Cook Campus in New Brunswick and North Brunswick (753 acres)—originally the site of the experimental farm of the land-grant Rutgers Scientific School, later Cook College, and now the School of Environmental and Biological Sciences; the Douglass Campus in New Brunswick (150 acres)—site of the New Jersey College for Women, later renamed Douglass College; and across the Raritan River, the Busch Campus in Piscataway (771 acres)—site of many science facilities; and the Livingston Campus in Piscataway and Edison (935 acres)—site of Livingston College, founded in 1969 as a shared learning community committed to academic innovation and excellence. In March 2006, the university approved the restructuring of undergraduate education in New Brunswick resulting in the merger of the university's four liberal arts colleges of Douglass, Livingston, Rutgers, and University College into a single "School of Arts and Sciences."

Tracing its origins to 1908, Rutgers–Newark today is housed on 38 acres in the downtown area of Newark, New Jersey's largest city. It is the northernmost campus of Rutgers, located just 20 minutes from New York City. The Camden Campus (29 acres) is located in the heart of the Camden Waterfront and metropolitan Philadelphia region. It began in the 1920s as an amalgam of the College of South Jersey and the South Jersey Law School.

In total, the university operates research and instructional facilities on 5,973 acres in 13 counties and 28 municipalities. As of July 2012, university degrees are awarded by 28 schools and colleges. In New Brunswick, 13 colleges and schools offered degrees; in Newark, eight colleges and schools offered degrees; in both Newark and New Brunswick, the Rutgers Business School: Graduate Programs–Newark and New Brunswick offered degrees; and in Camden, six colleges and schools offered degrees.

In June 2008, the Middle States Commission on Higher Education (MSCHE) reaffirmed the university's accreditation without conditions. Certain programs at the university are also accredited by professional accreditation associations. Among these include the AACSB International–The Association to Advance Collegiate Schools of Business; the Accreditation Board for Engineering and Technology, Inc. (ABET); and the Association of American Law Schools and American Bar Association.

DEGREE-GRANTING SCHOOLS AT RUTGERS UNIVERSITY

UNDERGRADUATE SCHOOLS	
NEW BRUNSWICK CAMPUS	
School of Arts and Sciences	<i>Bachelor of Arts, Bachelor of Science, Bachelor/M.D. offered jointly with UMDNJ-Robert Wood Johnson Medical School, Bachelor/M.P.P. or Bachelor/M.C.R.P. with the Edward J. Bloustein School of Planning and Public Policy, Bachelor of Arts/Bachelor of Science with the School of Engineering, Bachelor/Master of Business Administration with Rutgers Business School-Newark and New Brunswick, Bachelor/Master of Arts in Criminal Justice, Bachelor of Arts in Biological Sciences/Master of Science in Physician Assistant with UMDNJ School of Allied Health Professions</i>
School of Engineering	<i>Bachelor of Science. Bachelor of Science/Master of Business Administration with the Rutgers Business School-Newark and New Brunswick</i>
School of Environmental and Biological Sciences	<i>Bachelor of Science, Bachelor of Arts, Bachelor of Science/Master of City and Regional Planning with Edward J. Bloustein School of Planning and Public Policy, Bachelor of Science/Master of Public Health with UMDNJ, Bachelor of Science/M.D.. jointly with UMDNJ-Robert Wood Johnson Medical School, Bachelor of Science/Master of Business Administration with the Rutgers Business School-Newark and New Brunswick, Bachelor of Arts/Master of Education with the Graduate School of Education, Bachelor of Arts or Bachelor of Science/Master of Public Policy with Bloustein School of Planning and Public Policy</i>
Rutgers Business School - Undergraduate New Brunswick	<i>Bachelor of Science</i>
Mason Gross School of the Arts	<i>Bachelor of Fine Arts, Bachelor of Music, Bachelor of Fine Arts/Master of Education in Dance with the Graduate School of Education</i>
School of Communication and Information	<i>Bachelor of Arts granted jointly with School of Arts and Sciences, BA in Communication/MCIS</i>
Edward J. Bloustein School of Planning and Public Policy	<i>Bachelor of Arts, Bachelor of Science granted jointly with School of Arts and Sciences. Also, Bachelor of Science granted solely by the EJB School of Planning and Public Policy, Bachelor of Science/Master of Public Health, Bachelor of Arts/Master of Public Policy and Bachelor of Arts/Master of City and Regional Planning</i>
School of Management and Labor Relations	<i>Bachelor of Arts granted jointly with School of Arts and Sciences; Bachelor of Arts/Master of Human Resource Management. Also, B.S. (by SMLR alone)</i>

DEGREE-GRANTING SCHOOLS AT RUTGERS UNIVERSITY

UNDERGRADUATE SCHOOLS	
NEWARK CAMPUS	
Newark College of Arts and Sciences	<i>Bachelor of Arts, Bachelor of Science, Bachelor of Fine Arts, Bachelor of Arts/Master of Arts with the Graduate School-Newark, Bachelor of Arts or Bachelor of Science/Master of Science with the Graduate School-Newark, Bachelor of Arts or Bachelor of Science/Master of Arts with the School of Criminal Justice, Bachelor of Arts/Bachelor of Science/Master of Business Administration with Rutgers Business School, Bachelor of Science/Master of Information Technology with Rutgers Business School, Bachelor of Science/Master of Accountancy with Rutgers Business School, Bachelor of Science/Master of Quantitative Finance with Rutgers Business School, Bachelor of Arts or Bachelor of Science/Master of Public Administration with the School of Public Affairs and Administration</i>
College of Nursing	<i>Bachelor of Science, Bachelor of Science/Master of Science</i>
University College - Newark	<i>Bachelor of Arts, Bachelor of Science, Bachelor of Arts or Bachelor of Science/Master of Arts with the School of Criminal Justice, Bachelor of Arts/Bachelor of Science/Master of Business Administration with Rutgers Business School</i>
Rutgers Business School - Undergraduate Newark	<i>Bachelor of Science</i>
School of Criminal Justice	<i>Bachelor of Science granted jointly with Newark College of Arts and Sciences or University College-Newark</i>
School of Public Affairs and Administration	<i>Bachelor of Arts granted jointly with Newark College of Arts and Sciences</i>
CAMDEN CAMPUS	
Camden College of Arts and Sciences	<i>Bachelor of Arts, Bachelor of Science, Bachelor of Arts/Master of Arts, Bachelor of Arts/Master of Science, Bachelor of Arts/Master of Public Administration with the Graduate School-Camden, Bachelor of Arts/Juris Doctor with the School of Law-Camden</i>
School of Business - Camden	<i>Bachelor of Science, Bachelor of Hospitality Management, Bachelor of Arts in Business Administration</i>
University College - Camden	<i>Bachelor of Arts, Bachelor of Science</i>
School of Nursing	<i>Bachelor of Science</i>

DEGREE-GRANTING SCHOOLS AT RUTGERS UNIVERSITY

GRADUATE DEGREE-GRANTING SCHOOLS	
NEW BRUNSWICK CAMPUS	
Graduate School–New Brunswick	<i>Master of Arts, Master of Science, Master of Arts for Teachers, Master of Science for Teachers, Master of Business and Science, Master of Engineering, Master of Landscape Architecture, Doctor of Philosophy includes joint-degree programs with the University of Medicine and Dentistry of New Jersey</i>
Graduate School of Education	<i>Master of Education, Specialist in Education, Doctor of Education.</i>
School of Social Work	<i>Master of Social Work, Doctor of Social Work</i>
Graduate School of Applied and Professional Psychology	<i>Doctor of Psychology</i>
Mason Gross School of the Arts	<i>Master of Fine Arts, Master of Music, Artist Diploma in Music, and Doctor of Musical Arts</i>
School of Communication and Information	<i>Master of Communication and Information Studies. Master of Library and Information Science</i>
Edward J. Bloustein School of Planning and Public Policy	<i>Master of City and Regional Planning, Master of City and Regional Studies, Master of Public Affairs and Politics, and Master of Public Policy. Master of Public Health with the University of Medicine and Dentistry of New Jersey and the New Jersey Institute of Technology and Doctor of Public Health with the University of Medicine and Dentistry of New Jersey</i>
School of Management and Labor Relations	<i>Master of Human Resource Management and Master of Labor and Employment Relations</i>
Ernest Mario School of Pharmacy	<i>Doctor of Pharmacy, Doctor of Pharmacy/Master of Business Administration with Rutgers Business School, Doctor of Pharmacy/Doctor of Philosophy with the Graduate School-New Brunswick and with UMDNJ, Doctor of Pharmacy/Master of Public Health with UMDNJ</i>
NEW BRUNSWICK AND NEWARK CAMPUSES	
Rutgers Business School: Graduate Programs	<i>Master of Business Administration, Master of Accountancy in Taxation, Master of Accountancy, Master of Quantitative Finance, Master of Information Technology.</i>

DEGREE-GRANTING SCHOOLS AT RUTGERS UNIVERSITY

GRADUATE DEGREE-GRANTING SCHOOLS	
NEWARK CAMPUS	
Graduate School - Newark	<i>Master of Arts, Master of Arts for Teachers, Master of Arts in Liberal Studies, Master of Fine Arts, Master of Science, Master of Business and Science, Doctor of Philosophy, Includes joint-degree programs with the University of Medicine and Dentistry of New Jersey and the New Jersey Institute of Technology</i>
College of Nursing	<i>Master of Science, Doctor of Nursing Practice</i>
School of Law - Newark	<i>Juris Doctor</i>
School of Criminal Justice	<i>Master of Arts</i>
School of Public Affairs and Administration	<i>Master of Public Administration, Master of Public Health (with the University of Medicine and Dentistry of New Jersey and the New Jersey Institute of Technology)</i>
CAMDEN CAMPUS	
Graduate School - Camden	<i>Master of Arts, Master of Science, Master of Fine Arts, Master of Public Administration, Master of Business and Science, Master of Public Health (with UMDNJ and NJIT). Doctor of Physical Therapy (joint degree with UMDNJ-School of Health Related Professions). Doctor of Philosophy</i>
School of Law - Camden	<i>Juris Doctor</i>
School of Business - Camden	<i>Master of Accounting, Master of Business Administration</i>

Rutgers, The State University of New Jersey

Institutional Profile Report

Section B

Students Served

**Undergraduate Enrollment by Attendance Status
Fall 2012**

Students	Attendance Status				Total
	Full-time		Part-time		
	<u>Number</u>	<u>Percentage</u>	<u>Number</u>	<u>Percentage</u>	
Undergraduates	40,091	91.2%	3,876	8.8%	43,967

**Graduate and Doctoral-Professional Enrollment
by Attendance Status**

Fall 2012

Students	Attendance Status				Total
	Full-time		Part-time		
	<u>Number</u>	<u>Percentage</u>	<u>Number</u>	<u>Percentage</u>	
Graduate	6,597	51.1%	6,305	48.9%	12,902

Students	Attendance Status				Total
	Full-time		Part-time		
	<u>Number</u>	<u>Percentage</u>	<u>Number</u>	<u>Percentage</u>	
Doctoral-Professional Practice	1,562	81.4%	357	18.6%	1,919

Students	Attendance Status				Total
	Full-time		Part-time		
	<u>Number</u>	<u>Percentage</u>	<u>Number</u>	<u>Percentage</u>	
Total	8,159	55.1%	6,662	44.9%	14,821

2012 Unduplicated Enrollments*
Rutgers - Universitywide

	Headcount Enrollment	Credit Hours	FTE
Undergraduate	49,781	1,322,413	44,080
Graduate	16,748	226,795	9,450
Doctoral-Professional Practice			1,662
TOTAL	66,529	1,549,208	55,192

*Data is for Academic Year September 1, 2011 thru August 31, 2012, not Fiscal Year.

**2012 Non-Credit Course Enrollments
Rutgers - Universitywide**

	Courses Offered	Student Enrollments
Continuous Education	2,944	48,400
NJ Agricultural Experiment Station	9,763	172,801 / 384,810**
Total Non-Credit Enrollment:	12,707	221,201 / 433,210

** Larger Extension number includes all 4-H participants

Rutgers, The State University of New Jersey

Institutional Profile Report

Section C

Characteristics of Undergraduate Students

**Mean Math and Verbal SAT for First-Time Freshmen,
by Admission Status and Overall**

Fall 2012

Admission Status	Full-Time Students *					
	Math	N	Reading	N	Writing	N
Regular Admits	616	6,616	572	6,616	590	6,615
EOF Admits	519	481	488	481	496	481
Special Admits	493	228	464	228	469	228
All Admits	605	7,325	563	7,325	580	7,324

Admission Status	Part-Time Students *					
	Math	N	Reading	N	Writing	N
Regular Admits	600	7	523	127	506	7
EOF Admits						
Special Admits						
All Admits	600	7	523	7	506	7

* Missing Scores: Full-Time Students - Math and Reading, 373; Writing, 374
Part-time Students - Math, Reading and Writing, 2

Enrollment in Remediation Courses, Fall 2012

All newly admitted first-year students will take Rutgers University's placement tests. Transfer students entering Rutgers without an equivalent English writing course or math course will also be required to take placement tests. The placement tests are designed to provide information about students' individual skills in the English language and in mathematics. The test results will be used to place students in the courses and sections appropriate to their level of preparation.

Total Number of Undergraduate Students Enrolled in Fall 2012

Total Undergraduate Enrollment	Number of Students Enrolled in One or More Remedial Courses *	Percent of Total
43,967	2,735	6.2%

Total Enrollment = includes all students, FT, PT, returning, transfer, etc.

Total number of First-time, Full-time (FTFT) students enrolled in remediation in Fall 2012

Total Number of FTFT Students	Number of FTFT Students Enrolled in One or More Remedial Courses *	Percent of FTFT Enrolled in One or More Remedial Course
7,698	1,855	24.1%

First-time, Full-time students (FTFT) enrolled in remediation in Fall 2012 by subject area

Subject Area	Number of FTFT Enrolled	Percent of all FTFT Enrolled
Reading		
Writing		
English	901	11.7%
Math Computation	52	0.7%
Elementary Algebra	1,313	17.1%

(For institutions who do not separate reading & writing):

Total English	901	11.7%
---------------	-----	-------

Notes:

Percentages should be computed using the total number provided in part 3.

- Numbers exclude ESL students.

** Remedial numbers are through intermediate algebra.*

Undergraduate Enrollment, Fall 2012

By Race/Ethnicity						
	Full-Time		Part-Time		Total	
	N	Percent	N	Percent	N	Percent
African American	3,928	9.8%	585	15.1%	4,513	10.3%
American Indian	41	0.1%	4	0.1%	45	0.1%
Asian*	9,760	24.3%	495	12.8%	10,255	23.3%
Latino	5,379	13.4%	538	13.9%	5,917	13.5%
White	17,762	44.3%	1,766	45.6%	19,528	44.4%
Non Resident Alien	1,212	3.0%	58	1.5%	1,270	2.9%
Unknown*	2,009	5.0%	430	11.1%	2,439	5.5%
Total	40,091		3,876		43,967	

By Gender						
	Full-Time		Part-Time		Total	
	N	Percent	N	Percent	N	Percent
Female	19,946	49.8%	2,120	54.7%	22,066	50.2%
Male	20,145	50.2%	1,756	45.3%	21,901	49.8%
Total	40,091		3,876		43,967	

By Age						
	Full-Time		Part-Time		Total	
	N	Percent	N	Percent	N	Percent
Less Than 18	115	0.3%	118	3.0%	233	0.5%
18-19	13,206	32.9%	101	2.6%	13,307	30.3%
20-21	16,063	40.1%	302	7.8%	16,365	37.2%
22-24	7,731	19.3%	1,123	29.0%	8,854	20.1%
25-29	1,365	3.4%	848	21.9%	2,213	5.0%
30-34	530	1.3%	426	11.0%	956	2.2%
35-39	268	0.7%	309	8.0%	577	1.3%
40-49	256	0.6%	383	9.9%	639	1.5%
50-64	111	0.3%	180	4.6%	291	0.7%
65 and Older	2	0%	15	0.4%	17	0.0%
Unknown	444	1%	71	1.8%	515	1.2%
Total	40,091		3,876		43,967	

*Note: Asian includes Pacific Islanders and Unknown includes "Two or More" Races

**Financial Aid from Federal, State
and
Institution-Funded Programs, AY 2011-12**

	<u>Recipients</u>	<u>Dollars(\$)</u>	<u>\$/Recipient</u>
<u>FEDERAL PROGRAMS</u>			
Pell Grants	15,067	63,156,000	4,191.68
College Work Study	3,136	3,988,000	1,271.68
Perkins Loans	3,287	4,991,000	1,518.41
SEOG	1,948	2,058,000	1,056.47
PLUS Loans	2,934	41,429,000	14,120.31
Stafford Loans (Subsidized)	21,248	91,981,000	4,328.93
Stafford Loans (Unsubsidized)	21,835	75,785,000	3,470.80
SMART & ACG or other	0	0	
<u>STATE PROGRAMS</u>			
Tuition Aid Grants (TAG)	11,789	73,060,000	6,197.30
Educational Opportunity Fund (EOF)	2,776	3,547,000	1,277.74
Outstanding Scholars (OSRP)	0	0	
Distinguished Scholars	1,190	1,086,000	912.61
Urban Scholars	394	351,000	890.86
NJ STARS	79	471,000	5,962.03
NJCLASS Loans	2,231	28,243,000	12,659.35
<u>INSTITUTIONAL PROGRAMS</u>			
Grants/Scholarships	19,741	85,778,000	4,345.17
Loans	69	259,000	3,753.62

Source: NJIPEDS Form #41 Student Financial Aid Report

**Undergraduate Enrollment by State of Residence
Total First-Time Undergraduates, Fall 2012**

Place of Residence	Enrollment	
	Number	Percentage
New Jersey	6,782	88.1
Non-New Jersey	916	11.9
Total	7,698	100

Rutgers, The State University of New Jersey

Institutional Profile Report

Section D

Student Outcomes

**Four-, Five- and Six-Year Graduation Rates of Fall 2006
Full-time First-time Freshmen by Race/Ethnicity**

Race/Ethnicity	Fall 2006 Cohort	Graduates after 4 Years		Graduates after 5 Years		Graduates after 6 Years	
	N	N	%	N	%	N	%
African American	668	269	40.3	439	65.7	479	71.7
Asian	1,643	947	57.6	1,263	76.9	1,314	80.0
Latino	648	220	34.0	394	60.8	424	65.4
White	3,004	1,663	55.4	2,180	72.6	2,273	75.7
Non-Resident Alien	122	67	54.9	93	76.2	98	80.3
Other *	229	110	48.0	160	69.9	170	74.2
Total	6,314	3,276	51.9	4,529	71.7	4,758	75.4

* Other includes American Indian and Unknown Race.

Degrees Conferred, FY 2012

By Race/Ethnicity								
	Baccalaureate		Masters		Doctoral		Doctoral-Professional	
	N	Percent	N	Percent	N	Percent	N	Percent
African American	965	965.0	287	8.9	18	3.7	70	9.4
American Indian	12	0.1	2	0.1	1	0.2	2	0.3
Asian	1,981	20.9	334	10.4	44	9.1	145	19.4
Latino	1,065	11.2	236	7.3	18	3.7	45	6.0
White	4,900	51.6	1,579	49.0	204	42.1	396	53.0
Two or More	214	2.3	47	1.5	0	0.0	8	1.1
Non Resident Alien	170	1.8	571	17.7	169	34.9	20	2.7
Unknown	184	1.9	164	5.1	30	6.2	61	8.2
Total	9,491		3,220		484		747	

By Gender								
	Baccalaureate		Masters		Doctoral		Doctoral-Professional	
	N	Percent	N	Percent	N	Percent	N	Percent
Male	4,591	48.4	1,305	40.5	228	47.1	380	50.9
Female	4,900	51.6	1,915	59.5	256	52.9	367	49.1
Total	9,491		3,220		484		747	

Degrees Conferred by General Field, FY 2012

IPEDS CIP Code Major Category	Baccalaureate	Master	Doctorate	Doctoral- Professional	Total
Agricultural Sciences	91	28	9		128
Conservation & Renew Resources	136	10	10		156
Architecture	33	96			129
Area Studies	115	16	4		135
Business/Management	1,465	908	19		2,392
Communications	683				683
Computer Sciences	222	87	17		326
Education		366	24		390
Engineering	679	171	58		908
English/Letters	340	77	18		435
Exercise Science & Sport Studies	279				279
Foreign Language	133	33	20		186
Health Sciences	399	123	22	223	767
History	337	42	13		392
Law				498	498
Liberal Studies	44	8			52
Library Science		143	9		152
Life Sciences	837	55	71		963
Mathematics/Statistics	127	122	12		261
Multidiscipline	134	27	10		171
Philosophy/Religion	88		8		96
Physical Sciences	150	33	29		212
Protective Service	516	37	9		562
Psychology	950	68	47		1,065
Public Administration	178	595	11		784
Social Sciences	1,242	94	54		1,390
Visual/Performing Arts	313	81	10	26	430
TOTAL	9,491	3,220	484	747	13,942

**Third Semester Retention of Full-time First-time Freshmen
by Attendance, Fall 2011 to Fall 2012**

Race/Ethnicity	Retained		Not Retained		TOTAL	
	N	%	N	%	N	%
Full-Time	6,727	88.7	853	11.3	7,580	100
Part-Time	9	52.9	8	47.1	17	100
Total	6,736	88.7	861	11.3	7,597	100

**Third Semester Retention of Full-time First-time Freshmen
by Race/Ethnicity, Fall 2011 to Fall 2012**

Race/Ethnicity	COHORT	RETAINED		NOT RETAINED	
	N	N	%	N	%
African American	641	560	87.4	81	12.6
American Indian	5	5	100.0		
Asian	2,120	1,996	94.2	124	5.8
Hawaiian	34	32	94.1	2	5.9
Latino	992	875	88.2	117	11.8
White	3,239	2,914	90.0	325	10.0
Two or More	260	228	87.7	32	12.3
Non-Resident Alien	191	160	83.8	31	16.2
Unknown	98	91	92.9	7	7.1
Total	7,580	6,861	90.5	719	9.5

Rutgers, The State University of New Jersey

Institutional Profile Report

Section E

Faculty Characteristics

Full-Time Faculty by Race/Ethnicity, Gender, Tenure Status and Academic Rank, Fall 2012

Race/Ethnicity	Gender	TENURED				Total
		Professor	Associate Professor	Assistant Professor	All Others	
African American	Male	19	9	0	0	28
	Female	7	20	0	0	27
American Indian	Male	0	1	0	0	1
	Female	0	0	0	0	0
Asian *	Male	97	41	0	0	138
	Female	15	20	0	0	35
Latino	Male	17	11	0	0	28
	Female	5	4	0	0	9
White	Male	572	207	0	0	779
	Female	196	155	0	0	351
Non-Resident Alien	Male	5	16	0	0	21
	Female	4	11	0	0	15
Unknown *	Male	5	3	0	0	8
	Female	5	4	0	0	9
Total	Male	715	288	0	0	1,003
	Female	232	214	0	0	446

Race/Ethnicity	Gender	WITHOUT TENURE				Total
		Professor	Associate Professor	Assistant Professor	All Others	
African American	Male	1	4	6	7	18
	Female	2	2	13	5	22
American Indian	Male	0	0	1	0	1
	Female	0	0	2	0	2
Asian *	Male	1	6	24	13	44
	Female	4	3	19	9	35
Latino	Male	1	3	8	3	15
	Female	0	3	11	3	17
White	Male	15	26	82	98	221
	Female	14	33	87	111	245
Non-Resident Alien	Male	1	6	55	10	72
	Female	0	2	31	7	40
Unknown *	Male	7	10	82	32	131
	Female	4	14	95	33	146
Total	Male	26	55	258	163	502
	Female	24	57	258	168	507

Race/Ethnicity	Gender	TOTAL				Total
		Professor	Associate Professor	Assistant Professor	All Others	
African American	Male	20	13	6	7	46
	Female	9	22	13	5	49
American Indian	Male	0	1	1	0	2
	Female	0	0	2	0	2
Asian *	Male	98	47	24	13	182
	Female	19	23	19	9	70
Latino	Male	18	14	8	3	43
	Female	5	7	11	3	26
White	Male	587	233	82	98	1,000
	Female	210	188	87	111	596
Non-Resident Alien	Male	6	22	55	10	93
	Female	4	13	31	7	55
Unknown *	Male	12	13	82	32	139
	Female	9	18	95	33	155
Total	Male	741	343	258	163	1,505
	Female	256	271	258	168	953

**Percentage of Course Sections Taught
By Full-Time and Part-Time Faculty
Fall 2012**

Total Number of Course Sections	Taught by Full-time Faculty		Taught by Part-time Faculty		Taught by Others	
	N	%	N	%	N	%
8,138	4,607	56.6	1,982	24.4	1,549	19.0

Note: Others includes Full-time Administrators and Teaching Assistants

**University Faculty
Ratio of Full-time/Part-time Faculty
Fall 2012**

FACULTY	N	%
Full-time Faculty	2,458	59.0
Part-time Faculty	1,705	41.0
Total	4,163	100

Faculty Honors

Rutgers faculty are internationally recognized for the work they do to create new knowledge, generate innovative ideas, and prepare the next generation of leaders. They have won the National Medals of Science and Technology, Guggenheim Fellowships, MacArthur “Genius” Awards, and Fulbright Scholarships, and been named Professor of the Year.

They have been elected to the most prestigious scholarly societies: the National Academy of Sciences, National Academy of Engineering, Institute of Medicine, American Academy of Arts and Sciences, American Academy of Arts and Letters, and American Association for the Advancement of Science.

Recent Recognition

National Academy of Sciences



Four Rutgers professors are among 84 distinguished researchers elected to [membership in the National Academy of Sciences](#), one of the highest honors an American scientist can achieve. They are **Eva Andrei** (pictured), **Karin Rabe**, and **David Vanderbilt** (pictured), all professors of physics at the School of Arts and Sciences (SAS), and **Robin Fox**, professor of anthropology at SAS.

Japan Prize



J. Frederick Grassle, professor emeritus of marine science and founding director of the Rutgers Institute of Marine and Coastal Sciences, is the [recipient of the 2013 Japan Prize](#) for his decades of work improving knowledge of ocean life.

National Academy of Engineering



Richard Frenkiel, senior consultant at WINLAB, received the [2013 Charles Stark Draper Prize](#) for his pioneering contributions to the world’s first cellular systems.

American Academy of Pediatrics



James Oleske, François Xavier Bagnoud Professor of Pediatrics, New Jersey Medical School, and medical director of the Circle of Life Foundation, was awarded the 2013 Lifetime Achievement Award for his contributions to advancing the prevention, diagnoses, and treatment of pediatric HIV/AIDS.

Gordon and Betty Moore Foundation



Kay Bidle, associate professor of marine and coastal sciences at the School of Environmental and Biological Sciences, is [one of 15 researchers nationwide selected to receive a Marine Microbiology Initiative Investigator Award](#). The scientists will share up to \$35 million in funding over five years to investigate marine microbial ecology.

Association for Prevention Teaching and Research



Marian Passannante, associate professor and interim chair designate, Department of Quantitative Methods, School of Public Health, and associate professor, Department of Preventive Medicine and Community Health, New Jersey Medical School, received the 2013 F. Marian Bishop Outstanding Educator Award.

American Association for the Advancement of Science (AAAS)



[Five Rutgers professors are among 702 scholars elevated to the rank of fellow](#), joining 52 previous Rutgers AAAS fellows. The new fellows are: **Monica Driscoll**, professor of molecular biology and biochemistry, School of Arts and Sciences; **Yogesh Jaluria** (pictured top), **professor and chair of mechanical and aerospace engineering, School of Engineering**; **Jing Li** (pictured bottom), professor of chemistry and chemical biology, School of Arts and Sciences; **Manish Parashar**, professor of electrical

and computer engineering, School of Engineering; and **Mark Gregory Robson**, dean of agricultural and urban programs and professor of entomology, School of Environmental and Biological Sciences.

Internal Society for Interferon and Cytokine Research



Sidney Pestka, adjunct professor of molecular genetics, microbiology, and immunology, Robert Wood Johnson Medical School, received the Distinguished Service Award. He is the founder and chief scientific officer of the PBL InterferonSource, described as the world's leading source of interferon and related products.

Association of Pathology Chairs



Kenneth M. Klein, professor of clinical pathology and laboratory medicine at New Jersey Medical School, received the Michele Raible Distinguished Teaching Award for 2013.

American Philosophical Association



Kimberly Kessler Ferzan, professor in the School of Law–Camden, [has been awarded the Berger Memorial Prize](#) for her published article on the intersection of law and philosophy.

Robert Wood Johnson Foundation (RWJF)



Naa Oyo Kwate, associate professor of human ecology and Africana studies, [is among the 10 winners of the RWJF Young Leader Award](#), which recognizes people ages 40 or under for their exceptional contributions to improving the health of the nation.

American Academy of Nursing



Susan W. Salmond (pictured, top), professor of nursing, and **Mary Kamienski** (pictured, bottom), associate professor and chair of the Department of Primary Care, both at the School of Nursing, were inducted as 2012 fellows of the American Academy of Nursing, one of the highest distinctions in the nursing profession.

National Lipid Association



Avedis Khachadurian, emeritus professor of medicine, Robert Wood Johnson Medical School, received the 2012 Distinguished Achievement Award in recognition of his accomplishments in the field of clinical lipidology.

Members of the National Academies

Election to membership in the National Academies is one of the highest honors a scientist can attain. These four prestigious bodies—the National Academy of Sciences, the National Academy of Engineering, the Institute of Medicine, and the National Research Council—bring together the nation’s top experts to advise the federal government on critical issues.

Rutgers faculty who are currently members of the National Academies are:

National Academy of Sciences

[Eva Andrei](#), Professor II, Department of Physics and Astronomy, School of Arts and Sciences
Election Year: 2013

[Joan W. Bennett](#), Associate Vice President for the Promotion of Women in Science, Engineering, and Mathematics; Professor II, Department of Plant Biology and Pathology, School of Environmental and Biological Sciences
Election Year: 2005

[William A. Berggren](#), Distinguished Visiting Professor, Department of Earth and Planetary Sciences, School of Arts and Sciences
Election Year: 1989

[Haim Brezis](#), Distinguished Visiting Professor of Mathematics, Department of Mathematics, School of Arts and Sciences
Election Year: 2003

[Felix Browder](#), University Professor of Mathematics, Department of Mathematics, School of Arts and Sciences
Election Year: 1973
Morrel Cohen, Distinguished Scientist, Department of Physics and Astronomy, School of Arts and Sciences
Election Year: 1978

[Allan Conney](#), Garbe Professor of Cancer and Leukemia Research, Department of Chemical Biology, Ernest Mario School of Pharmacy
Election Year: 1982

[Hugo K. Dooner](#), Professor, Department of Plant Biology and Pathology, School of Environmental and Biological Sciences; Waksman Institute of Microbiology
Election Year: 2007

[Paul G. Falkowski](#), Board of Governors Professor of Geological and Marine Science, Department of Earth and Planetary Sciences, School of Arts and Sciences; Institute of Marine and Coastal Sciences; Director, Rutgers Energy Institute
Election Year: 2007

[James Flanagan](#), Professor Emeritus, Department of Electrical and Computer Engineering, School of Engineering
Election Year: 1983

[Robin Fox](#), Professor, Department of Anthropology, School of Arts and Sciences
Election Year: 2013

[Charles R. Gallistel](#), Professor II, Department of Psychology, School of Arts and Sciences; Codirector, Rutgers Center for Cognitive Science
Election Year: 2002

[Rochel Gelman](#), Professor II, Department of Psychology, School of Arts and Sciences; Codirector, Rutgers Center for Cognitive Science
Election Year: 2006

[Henryk Iwaniec](#), New Jersey Professor of Mathematics, Department of Mathematics, School of Arts and Sciences
Election Year: 2006

[Dennis Kent](#), Board of Governors Professor of Geological Sciences, Department of Earth and Planetary Sciences, School of Arts and Sciences
Election Year: 2004

[Joel Lebowitz](#), George William Hill Professor of Mathematics and Physics, Department of Physics and Astronomy and Department of Mathematics, School of Arts and Sciences
Election Year: 1980

[Bonnie J. McCay](#), Board of Governors Distinguished Service Professor, Department of Human Ecology, School of Environmental and Biological Sciences
Election Year: 2012

[David Mechanic](#), René Dubos University Professor of Behavioral Sciences, Department of Sociology, School of Arts and Sciences; Director, Institute for Health, Health Care Policy and Aging Research
Election Year: 1991

[James C. Phillips](#), Distinguished Visiting Professor, Department of Physics and Astronomy, School of Arts and Sciences
Election Year: 1977

[Karin Rabe](#), Professor II, Department of Physics and Astronomy, School of Arts and Sciences
Election Year: 2013

[Lawrence R. Rabiner](#), Professor II, Department of Electrical and Computer Engineering, School of Engineering; Associate Director, Center for Advanced Information Processing
Election Year: 1990

[Endre Szemerédi](#), Professor of Computer Science, Department of Computer Science, School of Arts and Sciences
Election Year: 2010

[David Vanderbilt](#), Professor II, Department of Physics and Astronomy, School of Arts and Sciences
Election Year: 2013

[Evelyn Witkin](#), Barbara McClintock Professor Emerita of Genetics, Waksman Institute of Microbiology
Election Year: 1977

National Academy of Engineering

[James Flanagan](#), Professor Emeritus, Department of Electrical and Computer Engineering, School of Engineering
Election Year: 1978

[Richard H. Frenkiel](#), Visiting Professor, Department of Electrical and Computer Engineering, School of Engineering
Election Year: 1997

[James D. Idol](#), Professor Emeritus, Department of Materials Science and Engineering, School of Engineering
Election Year: 1986

[Bernard H. Kear](#), New Jersey Professor of Materials Science and Technology, Department of Materials Science and Engineering, School of Engineering; Director, Center for Nanomaterials Research
Election Year: 1979

[Michael Lesk](#), Professor and Chair, Department of Library and Information Science, School of Communication and Information
Election Year: 2005

[Lawrence R. Rabiner](#), Professor II, Department of Electrical and Computer Engineering, School of Engineering; Associate Director, Center for Advanced Information Processing
Election Year: 1983

[Elias Snitzer](#), Professor Emeritus, Department of Materials Science and Engineering, School of Engineering
Election Year: 1979

[John B. Wachtman Jr.](#), Professor Emeritus, Department of Materials Science and Engineering, School of Engineering
Election Year: 1976

Institute of Medicine

[Robert L. Barchi](#), President
Election Year: 1993

[Joel A. DeLisa](#), Professor Emeritus, Department of Physical Medicine and Rehabilitation, New Jersey Medical School
Election Year: 2011

[Charles K. Francis](#), Department of Cardiovascular Diseases and Hypertension, Division of Medicine, Robert Wood Johnson Medical School
Election Year: 1990

[Gerald N. Grob](#), Henry E. Sigerist Professor of the History of Medicine Emeritus, Department of History, School of Arts and Sciences; Institute for Health, Health Care Policy and Aging Research
Election Year: 1990

[William Holzemer](#), Dean and Professor II, College of Nursing
Election Year: 2003

[Casimir A. Kulikowski](#), Board of Governors Professor of Computer Science, Department of Computer Science, School of Arts and Sciences
Election Year: 1988

[Howard Leventhal](#), Board of Governors Professor of Health Sciences, Department of Psychology, School of Arts and Sciences
Election Year: 1997

[David Mechanic](#), René Dubos University Professor of Behavioral Sciences, Department of Sociology, School of Arts and Sciences; Director, Institute for Health, Health Care Policy and Aging Research
Election Year: 1971

[Louise B. Russell](#), Professor, Department of Economics, School of Arts and Sciences; Chair, Division of Health Policy, Institute for Health, Health Care Policy and Aging Research
Election Year: 1984

Four New National Academy of Sciences Members



Anthropologist **Robin Fox**, second from left, and physicists **Eva Andrei**, **Karin Rabe**, and **David Vanderbilt**, left to right, are the latest Rutgers professors to be elected to membership in the National Academy of Sciences. All four are faculty in the School of Arts and Sciences. [Learn more.](#)

Rutgers, The State University of New Jersey

Institutional Profile Report

Section F

Characteristics of the Governors and Trustees

**Governing Board Characteristics
FY 2012-2013**

Board of Governors

	White	African American	Latino	Asian	American Indian	Non-Resident Alien	Vacancy	Total
Male	9	1						10
Female	1							1
Total	10	1						11

Board of Trustees

	White	African American	Latino	Asian	American Indian	Non-Resident Alien	Vacancy	Total
Male	30	5	2	2				39
Female	9	5	2	2				18
Vacancy							2	2
Total	39	10	4	4			2	59

Board of Governors and Trustees

URL <http://ruweb.rutgers.edu/governance/>

Governing Board Characteristics
Members of the Board of Governors and/or Trustees
FY 2012-2013

Board of Governors

NAME	TITLE	AFFILIATION
<i>Robert L. Barchi</i>	President	Ex Officio Member of the Board of Governors
<i>Gregory Q. Brown</i>	Chairman and Chief Executive Officer	Motorola Solutions, Inc.
<i>Joseph T. Cashin</i>	Student Representative - 2013	School of Arts and Sciences, 2014
<i>Anthony J. DePetris</i>	Director of Administrative and Personnel Services	LEAP Academy University Charter School
<i>Gerald C. Harvey</i>	Of Counsel	Marcus, Brody, Ford, Kessler & Sahner, LLC
<i>Mark P. Hershhorn</i>	Chairman and CEO	CKS & Associates
<i>M. William Howard, Jr.</i>	Pastor	Bethany Baptist Church
<i>Ralph Izzo</i>	Chairman of the Board; President and Chief Executive Officer	Public Service Enterprise Group, Inc.
<i>Gordon A. MacInnes</i>	President	New Jersey Policy Perspectives
<i>Paul Panayotatos</i>	Faculty Representative - 2013	Department of Electrical and Computer Engineering
<i>Samuel Rabinowitz</i>	Faculty Representative - 2013	School of Business-Camden
<i>Joseph J. Roberts, Jr.</i>	Speaker of the General Assembly	New Jersey General Assembly
<i>Kenneth M. Schmidt</i>	Retired, Managing Director	Dillion Read & Co., Inc.
<i>Daniel H. Schulman</i>	Sprint Group President	Enterprise Growth, American Express Corporation
<i>Candace L. Straight</i>	Private Investor	Director and Investment Banking Consultant

Governing Board Characteristics
Members of the Board of Governors and/or Trustees
FY 2012-2013

Board of Trustees

NAME	TITLE	AFFILIATION
<i>Robert L. Barchi</i>	President	Ex Officio Board Member
<i>Sol J. Barer</i>	Retired, Chairman and Chief Executive Officer	Celgene Corporation; SJBarer Consulting, LLC
<i>Gregory Bender</i>	Senior Packaging, Handling, Storage and Transportation Engineer	Naval Surface Warfare Center, Indian Head Division
<i>Andrew S. Berns</i>	Partner	Einhorn Harris Ascher Barbarito & Frost, PC
<i>William E. Best</i>	Senior Vice President	PNC Bank
<i>Joan L. Bildner</i>	President	S.M.E. Co., Inc.
<i>Michael A. Bogdonoff, Esq.</i>	Of Counsel	Dechert LLP
<i>Gregory Q. Brown</i>	Chairman and Chief Executive Officer	Motorola Solutions, Inc.
<i>Dominick J. Burzichelli</i>	Vice President and Chief Operating Officer	Gloucester County College
<i>Dorothy W. Cantor</i>	Psychologist	Private Practice, Westfield, NJ
<i>Hollis A. Copeland</i>	Principal-Institutional Stock Broker	Williams Capital Group
<i>Martha A. Cotter</i>	Faculty Representative - 2013	Department of Chemistry and Chemical Biology
<i>Steven M. Darien</i>	Chairman and Chief Executive Officer	The Cabot Advisory Group LLC
<i>Margaret T. Derrick</i>	Senior Counselor, Retired	Consumer Credit Counseling Services of NJ, Inc.
<i>Marisa A. Dietrich</i>	Field Executive	Girl Scouts Heart of New Jersey
<i>James F. Dougherty</i>	Internist and Co-Owner	Metropolitan Veterinary Associates
<i>Dennis M. Fenton</i>	Former Executive Vice President, Retired	Amgen, Inc.
<i>Lora L. Fong</i>	Managing Counsel	salesforce.com, inc.
<i>John R. Futey</i>	Administrative Law Judge of New Jersey	New Jersey Office of Administrative Law
<i>Albert R. Gamper, Jr.</i>	Retired, Chairman of the Board and Chief Executive Officer	CIT Group, Inc.
<i>Ronald J. Garutti</i>	Retired, Group Vice President and Head	Global Regulatory Affairs, Schering-Plough
<i>Evangeline Gomez</i>	Of Counsel	Fahy Choi, LLC

Governing Board Characteristics
Members of the Board of Governors and/or Trustees
FY 2012-2013

Board of Trustees

NAME	TITLE	AFFILIATION
<i>Joyce Wilson Harley</i>	Executive Director of Administrative Services	Essex County College
<i>M. Wilma Harris</i>	Vice President, Human Resources	Prudential
<i>John A. Hendricks</i>	Vice President and Business Administrator	Allegro School
<i>Robert A. Hering</i>	Managing Director	Cogent Alternative Strategies, Inc.
<i>Mark P. Hersshorn</i>	Chairman and Chief Executive Officer	CKS & Associates
<i>M. William Howard, Jr.</i>	Pastor	Bethany Baptist Church
<i>John D. Hugelmeyer</i>	Deputy Attorney General	State of New Jersey - Department of Law & Public Safety
<i>Frank B. Hundley</i>	Assistant Vice President	Merrill Lynch
<i>Ralph Izzo</i>	Chairman of the Board; President and Chief Executive Officer	Public Service Enterprise Group, Inc.
<i>Nimesh S. Jhaveri</i>	Executive Director	Transforming Community Pharmacy, Walgreen Co.
<i>Roberta Kanarick</i>	Educational Consultant	
<i>Tilak Lal</i>	Managing Director	Risk Management, K2 Advisors
<i>Jennifer Lewis-Hall</i>	Broadcast Journalist, Radio Host, Television and Media Expert, President and Founder	The Journey Productions, LLC
<i>Christine M. Lomiquen</i>	Student Charter Trustee	School of Engineering, 2009
<i>Debra Ann Lynch</i>	Director of Psychology	Hunterdon Developmental Center
<i>Gordon A. MacInnes</i>	President	New Jersey Policy Perspectives
<i>Duncan L. MacMillan</i>		Bloomberg L.P.
<i>Rashida Y.V. MacMurray</i>	Manager, Capital Projects Consulting	Deloitte Financial Advisory Services, LLP
<i>Iris Martinez-Campbell</i>	Community/Parent Involvement Specialist	Early Childhood Program, Perth Amboy Public Schools
<i>Carol Ann Monroe</i>	Director of Finance and Administration	Hale House Center Inc.
<i>Robert E. Mortensen</i>	Chief Executive Officer	Rift Valley Railways (Uganda); Board President, Board of Directors, The Philadelphia Singers and Principal, R.E. Mortensen Associates (Transportation Consultants)
<i>John A. O'Malley</i>	Retired, Chairman, Chief Executive Office, President, Retired	Iris International, Inc.

Governing Board Characteristics
Members of the Board of Governors and/or Trustees
FY 2012-2013

Board of Trustees

NAME	TITLE	AFFILIATION
<i>Jose A. Piazza</i>	Vice President - Finance Transformation Program	Verizon Services Operations
<i>Sidney Rabinowitz</i>	Retired	
<i>George A. Rears</i>	Director, Information Technology	Gerresheimer Glass Inc.
<i>James H. Rhodes</i>	Deputy County Administrator	County of Camden
<i>Dudley H. Rivers, Jr.</i>	Global Controller, Financial Services	Johnson & Johnson Corporate
<i>Joseph J. Roberts, Jr.</i>	Speaker of the General Assembly	New Jersey General Assembly
<i>Alejandro Roman</i>	Relationship Manager	Institutional Client Services, Vanguard
<i>Louis A. Sapirman</i>	Vice President and Associate General Counsel	Dun & Bradstreet Corporation
<i>Kenneth M. Schmidt</i>	Retired, Managing Director	Dillon Read & Co., Inc.
<i>Richard H. Shindell</i>	Retired, Vice President	T. Rowe Price Association
<i>Menahem Spiegel</i>	Faculty Representative - 2013	Department of Finance and Economics
<i>Susan Stabile</i>	School Nurse	Newark Public Schools
<i>Robert L. Stevenson</i>	President	PL Custom Emergency Vehicles
<i>Sandy J. Stewart</i>	Director of Laboratory Operations	Metabolon, Inc.
<i>Candace I. Straight</i>	Private Investor	Director and investment Banking Consultant
<i>Heather C. Taylor</i>	Director	EisnerAmper LLP
<i>Laurel A. Van Leer</i>	Writer, Freelance	
<i>Lucas J. Visconti</i>	Chief Executive Officer	DiversityInc Media LLC
<i>Katherine Yabut</i>	Student Representative	School of Arts and Sciences, 2014

Governing Board Characteristics
FY 2013-2014

Board of Governors

	White	African American	Latino	Asian	American Indian	Non-Resident Alien	Vacancy	Total
Male	8	3	1					12
Female	2			1				3
Total	10	3	1	1				15

Board of Trustees

	White	African American	Latino	Asian	American Indian	Non-Resident Alien	Vacancy	Total
Male	28	6	2	2				38
Female	10	5	2	2				19
Vacancy							2	2
Total	38	11	4	4			2	59

Board of Governors and Trustees

URL <http://ruweb.rutgers.edu/governance/>

Governing Board Characteristics
Members of the Board of Governors and/or Trustees
FY 2013-2014

Board of Governors

NAME	TITLE	AFFILIATION
<i>Robert L. Barchi</i>	President	Ex Officio Member of the Board of Governors
<i>Gregory Q. Brown</i>	Chairman and Chief Executive Officer	Motorola Solutions, Inc.
<i>Joseph T. Cashin</i>	Student Representative - 2014	School of Arts and Sciences, 2014
<i>Anthony J. DePetris</i>	Director of Administrative and Personnel Services	LEAP Academy University Charter School
<i>Margaret T. Derrick</i>	Senior Counselor, Retired	Consumer Credit Counseling Services of N.J., Inc.
<i>Lora L. Fong</i>	General Counsel and Senior Vice President	Transformation Practices at Diversity Inc.
<i>Ann B. Gould</i>	Faculty Representative - 2014	SEBS - Plant Biology & Pathology
<i>Gerald C. Harvey</i>	Of Counsel	Marcus, Brody, Ford, Kessler & Sahner, LLC
<i>Mark P. Hershhorn</i>	Chairman and CEO	CKS & Associates
<i>M. William Howard, Jr.</i>	Pastor	Bethany Baptist Church
<i>Ralph Izzo</i>	Chairman of the Board; President and Chief Executive Officer	Public Service Enterprise Group, Inc.
<i>Gordon A. MacInnes</i>	President	New Jersey Policy Perspectives
<i>Martin Perez</i>	Attorney; Attorney At Law	Perez & Bomblynn P.C.; Founder and President of the Latino Leadership Alliance of New Jersey (LLANJ)
<i>Samuel Rabinowitz</i>	Faculty Representative - 2014	School of Business-Camden
<i>Dudley H. Rivers, Jr.</i>	Global Controlled	Financial Services, Johnson & Johnson Corporate
<i>Joseph J. Roberts, Jr.</i>	Speaker of the General Assembly	New Jersey General Assembly
<i>Kenneth M. Schmidt</i>	Retired, Managing Director	Dillion Read & Co., Inc.
<i>Candace L. Straight</i>	Private Investor	Director and Investment Banking Consultant

Governing Board Characteristics
Members of the Board of Governors and/or Trustees
FY 2013-2014

Board of Trustees

NAME	TITLE	AFFILIATION
<i>Robert L. Barchi</i>	President	Ex Officio Board Member
<i>Michael W. Azzara</i>	Senior Consultant	Foley Proctor Yoskowitz
<i>Kristine Baffo</i>	Student Representative, 2014	School of Arts and Sciences, 2015
<i>Gregory Bender</i>	Senior Packaging, Handling, Storage and Transportation Engineer	Naval Surface Warfare Center, Indian Head Division
<i>Andrew S. Berns</i>	Partner	Einhorn Harris Ascher Barbarito & Frost, PC
<i>William E. Best</i>	Senior Vice President	PNC Bank
<i>Gregory Q. Brown</i>	Chairman and Chief Executive Officer	Motorola Solutions, Inc.
<i>Dominick J. Burzichelli</i>	Vice President and Chief Operating Officer	Gloucester County College
<i>Dorothy W. Cantor</i>	Psychologist	Private Practice, Westfield, NJ
<i>Hollis A. Copeland</i>	Principal-Institutional Stock Broker	Williams Capital Group
<i>Anthony Covington</i>	Student Representative, 2014	Rutgers Business School-Newark/New Brunswick, 2016
<i>Alan M. Crosta, Jr.</i>	Chairman	Department of Anesthesiology, Morristown Medical Center
<i>Steven M. Darien</i>	Chairman and Chief Executive Officer	The Cabot Advisory Group LLC
<i>Margaret T. Derrick</i>	Senior Counselor, Retired	Consumer Credit Counseling Services of NJ, Inc.
<i>Marisa A. Dietrich</i>	Field Executive	Girl Scouts Heart of New Jersey
<i>Mary I. DiMartino</i>	Executive Director	J.P. Morgan Securities LLC
<i>James F. Dougherty</i>	Internist and Co-Owner	Metropolitan Veterinary Associates
<i>Lora L. Fong</i>	General Counsel and Senior Vice President	Transformation Practices at Diversity Inc.
<i>Albert R. Gamper, Jr.</i>	Retired, Chairman of the Board and Chief Executive Officer	CIT Group, Inc.
<i>Ronald J. Garutti</i>	Retired, Group Vice President and Head	Global Regulatory Affairs, Schering-Plough

Governing Board Characteristics
Members of the Board of Governors and/or Trustees
FY 2013-2014

Board of Trustees

NAME	TITLE	AFFILIATION
<i>Evangeline Gomez</i>	Of Counsel	Fahy Choi, LLC
<i>Joyce Wilson Harley</i>	Executive Director of Administrative Services	Essex County College
<i>M. Wilma Harris</i>	Retired, Vice President, Human Resources	Prudential
<i>Mark P. Hershhorn</i>	Chairman and Chief Executive Officer	CKS & Associates
<i>M. William Howard, Jr.</i>	Pastor	Bethany Baptist Church
<i>John D. Hugelmeyer</i>	Deputy Attorney General	State of New Jersey - Department of Law & Public Safety
<i>Frank B. Hundley</i>	Assistant Vice President	Merrill Lynch
<i>Ralph Izzo</i>	Chairman of the Board; President and Chief Executive Officer	Public Service Enterprise Group, Inc.
<i>Nimesh S. Jhaveri</i>	Executive Director	Transforming Community Pharmacy, Walgreen Co.
<i>Roberta Kanarick</i>	Educational Consultant	
<i>Tilak Lal</i>	Managing Director	Risk Management, K2 Advisors
<i>Jennifer Lewis-Hall</i>	Broadcast Journalist, Radio Host, Television and Media Expert, President and Founder	The Journey Productions, LLC
<i>Debra Ann Lynch</i>	Director of Psychology	Hunterdon Developmental Center
<i>Gordon A. MacInnes</i>	President	New Jersey Policy Perspectives
<i>Duncan L. MacMillan</i>		Bloomberg L.P.
<i>Rashida V. MacMurray- Abdullah</i>	Manager, Capital Projects Consulting	Deloitte Financial Advisory Services, LLP
<i>Amy B. Mansue</i>	President and Chief Executive Officer	Children's Specialized Hospital, NJ
<i>Iris Martinez-Campbell</i>	Community/Parent Involvement Specialist	Early Childhood Program, Perth Amboy Public Schools
<i>Carol Ann Monroe</i>	Director of Finance and Administration	Hale House Center Inc.

Governing Board Characteristics
Members of the Board of Governors and/or Trustees
FY 2013-2014

Board of Trustees

NAME	TITLE	AFFILIATION
<i>Robert E. Mortensen</i>	Chief Executive Officer	Rift Valley Railways (Uganda); Board President, Board of Directors, The Philadelphia Singers and Principal, R.E. Mortensen Associates (Transportation Consultants)
<i>John A. O'Malley</i>	Retired, Chairman, Chief Executive Office, President, Retired	Iris International, Inc.
<i>Daniel J. Phelan</i>	Retired, Senior Advisor and Chief Executive Officer	GlaxoSmithKline
<i>Jose A. Piazza</i>	Vice President - Finance Transformation Program	Verizon Services Operations
<i>George A. Rears</i>	Director, Information Technology	Gerresheimer Glass Inc.
<i>James H. Rhodes</i>	Deputy County Administrator	County of Camden
<i>Dudley H. Rivers, Jr.</i>	Global Controller, Financial Services	Johnson & Johnson Corporate
<i>Joseph J. Roberts, Jr.</i>	Speaker of the General Assembly	New Jersey General Assembly
<i>Alejandro Roman</i>	Relationship Manager	Institutional Client Services, Vanguard
<i>Asha Samant</i>	Faculty Representative - 2014	Department of Restorative Dentistry
<i>Louis A. Sapirman</i>	Vice President and Associate General Counsel	Dun & Bradstreet Corporation
<i>Sidney D. Seligman</i>	Senior Vice President and Chief Human Resources Officer	St. Barnabas Health
<i>Richard H. Shindell</i>	Retired, Vice President	T. Rowe Price Association
<i>Menahem Spiegel</i>	Faculty Representative - 2014	Department of Finance and Economics
<i>Susan Stabile</i>	School Nurse	Newark Public Schools
<i>Robert L. Stevenson</i>	President	PL Custom Emergency Vehicles
<i>Sandy J. Stewart</i>	Retired, Director of Laboratory Operations	Metabolon, Inc.
<i>Candace I. Straight</i>	Private Investor	Director and Investment Banking Consultant

Governing Board Characteristics
Members of the Board of Governors and/or Trustees
FY 2013-2014

Board of Trustees

NAME	TITLE	AFFILIATION
<i>Heather C. Taylor</i>	Director	EisnerAmper LLP
<i>Lucas J. Visconti</i>	Chief Executive Officer	DiversityInc Media LLC
<i>Ronald D. Wilson</i>	Retired, President and Chief Operating Officer	Philadelphia Coca-Cola Bottling Company
<i>Justine Yu</i>	Student Charter Trustee- 2019	School of Arts and Sciences
<i>Sharon Vaz</i>	Student Representative- 2014	Bloustein School of Planning and Public Policy

Rutgers, The State University of New Jersey

Institutional Profile Report

Section G

A Profile of the Institution - Degree Programs

STATE OF NEW JERSEY -- COMMISSION ON HIGHER EDUCATION
INVENTORY OF PROGRAMS OFFERED BY NEW JERSEY INSTITUTIONS OF HIGHER EDUCATION

Rutgers University - Camden Campus

DEGREE LEVEL	CIP CODE	DEGREE NAME	PROGRAM	CIP TITLE
Bachelor's	520301	B.S.	Accounting	Accounting and Related Services
	050201	B.A.	Afro-American Studies	Ethnic, Cultural Minority, Gender, and Group Studies
	500701	B.A.	Art	Fine and Studio Arts
	260101	B.A.	Biology	Biology, General
	260101	B.S.	Biology	Biology, General
	511005	B.S.	Biomedical Technology	Clinical/Med Lab Science/Research & Allied Professions
	520201	B.A.	Business Administration	Business Administration, Management and Operations
	400501	B.A.	Chemistry	Chemistry
	400501	B.S.	Chemistry	Chemistry
	309999	B.A.	Childhood Studies	Multi/Interdisciplinary Studies, Other
	261104	B.S.	Computational & Integrative Biology	Biomathematics, Bioinformatics, and Computational Biology
	110101	B.A.	Computer Science	Computer and Information Sciences, General
	110101	B.S.	Computer Science	Computer and Information Sciences, General
	430104	B.A.	Criminal Justice	Criminal Justice and Corrections
	450601	B.A.	Economics	Economics
	230101	B.A.	English	English Language and Literature, General
	520801	B.S.	Finance	Finance and Financial Management Services
	160901	B.A.	French	Romance Languages, Literatures, and Linguistics
	300101	B.A.	General Science	Biological and Physical Sciences
	160501	B.A.	German	Germanic Languages, Literatures, and Linguistics
	540101	B.A.	History	History
	520901	B.H.M.	Hospitality Management	Hospitality Administration/Management
	521001	B.S.	Human Resource Management	Human Resources Management and Services
	309999	B.A.	Interdisc /Individual/Interdepartmental Major	Multi/Interdisciplinary Studies, Other
	309999	B.S.	Interdisc /Individual/Interdepartmental Major	Multi/Interdisciplinary Studies, Other
	240101	B.A.	Liberal Studies	Liberal Arts and Sciences, General Studies and Humanities
	520201	B.S.	Management	Business Administration, Management and Operations
	521401	B.S.	Marketing	Marketing
	270101	B.A.	Mathematics	Mathematics
	270101	B.S.	Mathematics	Mathematics
	500901	B.A.	Music	Music
	513801	B.S.	Nursing	Reg Nursing, Nurse Admin, Nursing Res & Clinical Nurse

STATE OF NEW JERSEY -- COMMISSION ON HIGHER EDUCATION
INVENTORY OF PROGRAMS OFFERED BY NEW JERSEY INSTITUTIONS OF HIGHER EDUCATION

Rutgers University - Camden Campus

DEGREE LEVEL	CIP CODE	DEGREE NAME	PROGRAM	CIP TITLE
Bachelor's				
	380101	B.A.	Philosophy	Philosophy
	400801	B.A.	Physics	Physics
	400801	B.S.	Physics	Physics
	451001	B.A.	Political Science	Political Science and Government
	420101	B.A.	Psychology	Psychology, General
	440701	B.A.	Social Work	Social Work
	451101	B.A.	Sociology	Sociology
	160905	B.A.	Spanish	Romance Languages, Literatures, and Linguistics
	500501	B.A.	Theater	Drama/Theatre Arts and Stagecraft
	451201	B.A.	Urban Studies	Urban Studies/Affairs
Post-Baccalaureate				
	513899	Grad.Cert.	School Nurse	Reg Nursing, Nurse Admin, Nursing Res & Clinical Nurse
	300101	Grad.Cert.	Science and Technology Management	Biological and Physical Sciences
Master's				
	520301	M.Acc.	Accounting	Accounting and Related Services
	260101	M.S.	Biology	Biology, General
	260101	M.S.T.	Biology	Biology, General
	520201	M.B.A.	Business Administration	Business Administration, Management and Operations
	300101	M.B.S.	Business and Science	Biological and Physical Sciences
	400501	M.S.	Chemistry	Chemistry
	309999	M.A.	Childhood Studies	Multi/Interdisciplinary Studies, Other
	261104	M.S.	Computational and Integrative Biology	Biostatistics, Bioinformatics, and Computational Biology
	110701	M.S.	Computer Science	Computer Science
	231302	M.F.A.	Creative Writing	Rhetoric and Composition/Writing Studies
	430104	M.A.	Criminal Justice	Criminal Justice and Corrections
	230101	M.A.	English	English Language and Literature, General
	160101	M.A.T.	Foreign Language	Linguistic, Comp, and Related Lang Studies and Services
	540101	M.A.	History	History
	240101	M.A.	Liberal Studies	Liberal Arts and Sciences, General Studies and Humanities
	279999	M.S.	Mathematical Sciences	Mathematics and Statistics, Other
	512308	M.P.T.	Physical Therapy (W/ UMDNJ)	Rehabilitation and Therapeutic Professions
	420101	M.A.	Psychology	Psychology, General

**STATE OF NEW JERSEY -- COMMISSION ON HIGHER EDUCATION
INVENTORY OF PROGRAMS OFFERED BY NEW JERSEY INSTITUTIONS OF HIGHER EDUCATION**

Rutgers University - Camden Campus

DEGREE LEVEL	CIP CODE	DEGREE NAME	PROGRAM	CIP TITLE
Master's	440401	M.P.A.	Public Administration	Public Administration
	512201	M.P.H.	Public Health (W/ UMDNJ)	Public Health
	440701	M.S.W.	Social Work	Social Work
Post-Master's	130401	Grad.Cert.	Educational Leadership	Educational Administration and Supervision
Doctoral	309999	Ph.D.	Childhood Studies	Multi/Interdisciplinary Studies, Other
	261104	Ph.D.	Computational and Integrative Biology	Biomathematics, Bioinformatics, and Computational Biology
	261503	Ph.D.	Neurosciences (W/ UMDNJ)	Neurobiology and Neurosciences
	512308	D.P.T.	Physical Therapy (W/ UMDNJ)	Rehabilitation and Therapeutic Professions
	440501	Ph.D.	Public Affairs	Public Policy Analysis
	220101	J.D.	Law	Law

**STATE OF NEW JERSEY -- COMMISSION ON HIGHER EDUCATION
INVENTORY OF PROGRAMS OFFERED BY NEW JERSEY INSTITUTIONS OF HIGHER EDUCATION**

Rutgers University - New Brunswick Campus

DEGREE LEVEL	CIP CODE	DEGREE NAME	PROGRAM	CIP TITLE
Pre-Bachelor's	040401	Certif	Environmental Planning	Environmental Design
Bachelor's	520301	B.S.	Accounting	Accounting and Related Services
	160101	B.A.	African/Mid Eastern & South Asian Lang & Lit	Linguistic, Comp, and Related Lang Studies and Services
	050201	B.A.	Africana Studies	Ethnic, Cultural Minority, Gender, and Group Studies
	010000	B.S.	Agriculture and Food Systems	Agriculture, General
	050102	B.A.	American Studies	Area Studies
	010901	B.S.	Animal Sciences	Animal Sciences
	450201	B.A.	Anthropology	Anthropology
	141301	B.S.	Applied Sciences In Engineering	Engineering Science
	500703	B.A.	Art History	Fine and Studio Arts
	400202	B.S.	Astrophysics	Astronomy and Astrophysics
	260202	B.A.	Biochemistry	Biochemistry, Biophysics and Molecular Biology
	140301	B.S.	Bioenvironmental Engineering	Agricultural Engineering
	260101	B.A.	Biological Sciences	Biology, General
	260101	B.S.	Biological Sciences	Biology, General
	261101	B.A.	Biomathematics	Biomathematics, Bioinformatics, and Computational Biology
	140501	B.S.	Biomedical Engineering	Biomedical/Medical Engineering
	261201	B.S.	Biotechnology	Biotechnology
	521301	B.S.	Business Analytics & Information Technology	Management Sciences and Quantitative Methods
	260401	B.A.	Cell Biology & Neuroscience	Cell/Cellular Biology and Anatomical Sciences
	140701	B.S.	Chemical Engineering	Chemical Engineering
	400501	B.A.	Chemistry	Chemistry
	160301	B.A.	Chinese	East Asian Languages, Literatures, and Linguistics
	140801	B.S.	Civil Engineering	Civil Engineering
	161200	B.A.	Classics	Classics and Classical Languages, Literatures, and Linguistics
	090101	B.A.	Communication	Communication and Media Studies
	160104	B.A.	Comparative Literature	Linguistic, Comp, and Related Lang Studies and Services
	110101	B.A.	Computer Science	Computer and Information Sciences, General
	110101	B.S.	Computer Science	Computer and Information Sciences, General
	430103	B.S.	Criminal Justice	Criminal Justice and Corrections
	500301	B.A.	Dance	Dance
	500301	B.F.A.	Dance	Dance
	050104	B.A.	East Asian Languages & Area Studies	Area Studies

**STATE OF NEW JERSEY -- COMMISSION ON HIGHER EDUCATION
INVENTORY OF PROGRAMS OFFERED BY NEW JERSEY INSTITUTIONS OF HIGHER EDUCATION**

Rutgers University - New Brunswick Campus

DEGREE LEVEL	CIP CODE	DEGREE NAME	PROGRAM	CIP TITLE
Bachelor's	030201	B.S.	Ecology/Evolution and Natural Resources	Natural Resources Management and Policy
	450601	B.A.	Economics	Economics
	141001	B.S.	Electrical & Computer Engineering	Electrical, Electronics and Communications Engineering
	230101	B.A.	English	English Language and Literature, General
	459999	B.S.	Environmental & Business Economics	Social Sciences, Other
	040401	B.S.	Environmental Planning & Design	Environmental Design
	030103	B.S.	Environmental Policy/ Institutions & Behavior	Natural Resources Conservation and Research
	030104	B.S.	Environmental Sciences	Natural Resources Conservation and Research
	050106	B.A.	European Studies	Area Studies
	450201	B.S.	Evolutionary Anthropology	Anthropology
	310505	B.S.	Exercise Science & Sport Studies	Health and Physical Education/Fitness
	520801	B.S.	Finance	Finance and Financial Management Services
	011001	B.S.	Food Science	Food Science and Technology
	160901	B.A.	French	Romance Languages, Literatures, and Linguistics
	260802	B.A.	Genetics	Genetics
	260804	B.A.	Genetics & Microbiology	Genetics
	450701	B.A.	Geography	Geography and Cartography
	400601	B.S.	Geological Sciences	Geological and Earth Sciences/Geosciences
	160501	B.A.	German	Germanic Languages, Literatures, and Linguistics
	540101	B.A.	History	History
	540199	B.A.	History & French	History
	540101	B.A.	History & Political Science	History
	521001	B.A.	Human Resource Management	Human Resources Management and Services
	143501	B.S.	Industrial & Systems Engineering	Industrial Engineering
	110401	B.A.	Information Technology & Informatics	Information Science/Studies
	309999	B.A.	Interdisc /Individual/Interdepartmental Major	Multi/Interdisciplinary Studies, Other
	309999	B.S.	Interdisc /Individual/Interdepartmental Major	Multi/Interdisciplinary Studies, Other
	160902	B.A.	Italian	Romance Languages, Literatures, and Linguistics
	380206	B.A.	Jewish Studies	Religion/Religious Studies
	090401	B.A.	Journalism and Media Studies	Journalism
	521002	B.S.	Labor and Employment Relations	Human Resources Management and Services
	521002	B.A.	Labor Studies and Employment Relations	Human Resources Management and Services
	050107	B.A.	Latin American Studies	Area Studies
	050203	B.A.	Latino & Hispanic Caribbean Studies	Ethnic, Cultural Minority, Gender, and Group Studies

**STATE OF NEW JERSEY -- COMMISSION ON HIGHER EDUCATION
INVENTORY OF PROGRAMS OFFERED BY NEW JERSEY INSTITUTIONS OF HIGHER EDUCATION**

Rutgers University - New Brunswick Campus

DEGREE LEVEL	CIP CODE	DEGREE NAME	PROGRAM	CIP TITLE
Bachelor's	160102	B.A.	Linguistics	Linguistic, Comp, and Related Lang Studies and Services
	520201	B.S.	Management	Business Administration, Management and Operations
	261302	B.S.	Marine Sciences	Ecology, Evolution, Systematics, and Population Biology
	521401	B.S.	Marketing	Marketing
	140601	B.S.	Materials Science & Engineering	Ceramic Sciences and Engineering
	270101	B.A.	Mathematics	Mathematics
	270101	B.S.	Mathematics	Mathematics
	141901	B.S.	Mechanical Engineering	Mechanical Engineering
	511005	B.S.	Medical Technology	Clinical/Medical Lab Sci/Resch and Allied Professions
	301301	B.A.	Medieval Studies	Medieval and Renaissance Studies
	400404	B.S.	Meteorology	Atmospheric Sciences and Meteorology
	260502	B.S.	Microbiology	Microbiological Sciences and Immunology
	050108	B.A.	Middle Eastern Studies	Area Studies
	260204	B.S.	Molecular Biology & Biochemistry	Biochemistry, Biophysics and Molecular Biology
	500901	B.A.	Music	Music
	500903	B.Mus.	Music	Music
	301901	B.S.	Nutritional Sciences	Nutrition Sciences
	512099	B.S.	Pharmacy	Pharmacy, Pharmaceutical Sciences, and Administration
	380101	B.A.	Philosophy	Philosophy
	400801	B.A.	Physics	Physics
	400801	B.S.	Physics	Physics
	451201	B.A.	Planning & Public Policy	Urban Studies/Affairs
	011101	B.S.	Plant Science	Plant Sciences
	451001	B.A.	Political Science	Political Science and Government
	160904	B.A.	Portuguese	Romance Languages, Literatures, and Linguistics
	420101	B.A.	Psychology	Psychology, General
	420101	B.S.	Psychology	Psychology, General
	512201	B.S.	Public Health	Public Health
	380201	B.A.	Religion	Religion/Religious Studies
	160402	B.A.	Russian	Slavic, Baltic and Albanian Languages, Literatures, & Linguistics
	440701	B.A.	Social Work	Social Work
	451101	B.A.	Sociology	Sociology
	160905	B.A.	Spanish	Romance Languages, Literatures, and Linguistics
	270501	B.A.	Statistics	Statistics

STATE OF NEW JERSEY -- COMMISSION ON HIGHER EDUCATION
 INVENTORY OF PROGRAMS OFFERED BY NEW JERSEY INSTITUTIONS OF HIGHER EDUCATION

Rutgers University - New Brunswick Campus

DEGREE LEVEL	CIP CODE	DEGREE NAME	PROGRAM	CIP TITLE
Bachelor's				
	270501	B.A.	Statistics/Mathematics	Statistics
	520203	B.S.	Supply Chain and Marketing Science	Business Administration, Management and Operations
	500501	B.A.	Theater Arts	Drama/Theatre Arts and Stagecraft
	500501	B.F.A.	Theater Arts	Drama/Theatre Arts and Stagecraft
	500701	B.A.	Visual Arts	Fine and Studio Arts
	500701	B.F.A.	Visual Arts	Fine and Studio Arts
	050207	B.A.	Women's & Gender Studies	Ethnic, Cultural Minority, Gender, and Group Studies
Post-Baccalaureate				
	300101	Grad.Cert.	Science and Technology Management	Biological and Physical Sciences
Mast.Cert.				
	303001	Grad.Cert.	Computational and Data-Enabled Sci and Eng	Computational Science
	380201	Grad.Cert.	Contemplative Studies	Religion/Religious Studies
	130501	Grad.Cert.	Educational Technology	Educational/Instructional Media Design
	030103	Grad.Cert.	Environmental Resource Monitoring	Natural Resources Conservation and Research
	010701	Grad.Cert.	International Agriculture/Environment	International Agriculture
	250101	Grad.Cert.	Library Services	Library Science and Administration
	131210	Certif	P-3 Education Certification	Teacher Ed and Prof Development, Specific Levels & Methods
	300101	Grad.Cert.	Pharmaceuticals & Clinical Trials Mgmt	Biological and Physical Sciences
	380201	Grad.Cert.	Religion and Conflict	Religion/Religious Studies
	380201	Grad.Cert.	Religions in America	Religion/Religious Studies
	380201	Grad.Cert.	Religious Studies	Religion/Religious Studies
Master's				
	520301	M.Accy.	Accounting	Accounting and Related Services
	130408	M.Ed.	Adminis & Supervision/Elementary Ed	Educational Administration and Supervision
	130409	M.Ed.	Admin & Supervision/Secondary Education	Educational Administration and Supervision
	131201	M.Ed.	Adult & Continuing Education	Teacher Ed and Prof Development, Specific Levels & Methods
	450201	M.A.	Anthropology	Anthropology
	450201	M.Phil.	Anthropology	Anthropology
	500703	M.A.	Art History	Fine and Studio Arts
	500703	M.Phil.	Art History	Fine and Studio Arts
	500903	Diploma	Artist's Diploma In Music	Music
	400499	M.S.	Atmospheric Science	Atmospheric Sciences and Meteorology
	260202	M.S.	Biochemistry	Biochemistry, Biophysics and Molecular Biology
	260202	M.S.	Biochemistry (W/ UMDNJ)	Biochemistry, Biophysics and Molecular Biology

**STATE OF NEW JERSEY -- COMMISSION ON HIGHER EDUCATION
INVENTORY OF PROGRAMS OFFERED BY NEW JERSEY INSTITUTIONS OF HIGHER EDUCATION**

Rutgers University - New Brunswick Campus

DEGREE LEVEL	CIP CODE	DEGREE NAME	PROGRAM	CIP TITLE
<i>Master's</i>				
	140301	M.S.	Bioenvironmental Engineering	Agricultural Engineering
	140501	M.E.	Biomedical Engineering	Biomedical/Medical Engineering
	140501	M.S.	Biomedical Engineering	Biomedical/Medical Engineering
	140501	M.S.	Biomedical Engineering (W/ UMDNJ)	Biomedical/Medical Engineering
	300101	M.B.S.	Business and Science	Biological and Physical Sciences
	260401	M.S.	Cell & Developmental Biology	Cell/Cellular Biology and Anatomical Sciences
	260401	M.S.	Cell & Developmental Biology (W/ UMDNJ)	Cell/Cellular Biology and Anatomical Sciences
	261001	M.S.	Cellular & Molecular Pharmacology	Pharmacology and Toxicology
	261001	M.S.	Cellular & Molecular Pharmacology (W/ UMDNJ)	Pharmacology and Toxicology
	140701	M.Phil.	Chemical & Biochemical Engineering	Chemical Engineering
	140701	M.S.	Chemical & Biochemical Engineering	Chemical Engineering
	140701	M.E.	Chemical and Biochemical Engineering	Chemical Engineering
	400501	M.Phil.	Chemistry & Chemical Biology	Chemistry
	400501	M.S.	Chemistry & Chemical Biology	Chemistry
	400501	M.S.T.	Chemistry & Chemical Biology	Chemistry
	160301	M.A.T.	Chinese	East Asian Languages, Literatures, and Linguistics
	040301	M.C.R.P.	City & Regional Planning	City/Urban, Community and Regional Planning
	040301	M.C.R.S.	City & Regional Studies	City/Urban, Community and Regional Planning
	140801	M.Phil.	Civil & Environmental Engineering	Civil Engineering
	140801	M.S.	Civil & Environmental Engineering	Civil Engineering
	161200	M.A.	Classics	Classics and Classical Languages, Literatures, and Linguistics
	161200	M.A.T.	Classics	Classics and Classical Languages, Literatures, and Linguistics
	161200	M.Phil.	Classics	Classics and Classical Languages, Literatures, and Linguistics
	131102	Ed.M.	College Student Affairs	Student Counseling and Personnel Services
	110401	M.C.I.S.	Communication & Information Studies	Information Science/Studies
	250101	M.Phil.	Communication/Information/Library Studies	Library Science and Administration
	160104	M.A.	Comparative Literature	Linguistic, Comp, and Related Lang Studies and Services
	110101	M.Phil.	Computer Science	Computer and Information Sciences, General
	110101	M.S.	Computer Science	Computer and Information Sciences, General
	239999	M.F.A.	Critical Writing	English Language and Literature/Letters, Other
	500301	M.F.A.	Dance	Dance
	131324	Ed.M.	Dance Education	Teacher Ed and Prof Development, Specific Levels & Methods
	160300	M.A.	East Asian Languages and Cultures	East Asian Languages, Literatures, and Linguistics
	261301	M.S.	Ecology & Evolution	Ecology, Evolution, Systematics, and Population Biology

**STATE OF NEW JERSEY -- COMMISSION ON HIGHER EDUCATION
INVENTORY OF PROGRAMS OFFERED BY NEW JERSEY INSTITUTIONS OF HIGHER EDUCATION**

Rutgers University - New Brunswick Campus

DEGREE LEVEL	CIP CODE	DEGREE NAME	PROGRAM	CIP TITLE
<i>Master's</i>	450601	M.A.	Economics	Economics
	450601	M.Phil.	Economics	Economics
	130101	M.A.	Education [Option Within Ph.D. Program Only]	Education, General
	259999	M.L.S.	Educational Media Services	Library Science, Other
	130603	M.Ed.	Educational Statistics & Measurement	Educational Assessment, Evaluation, and Research
	141001	M.Phil.	Electrical & Computer Engineering	Electrical, Electronics and Communications Engineering
	141001	M.S.	Electrical & Computer Engineering	Electrical, Electronics and Communications Engineering
	131202	M.Ed.	Elementary/Early Childhood Education	Teacher Ed and Prof Development, Specific Levels & Methods
	010901	M.S.	Endocrinology and Animal Biosciences	Animal Sciences
	131305	M.Ed.	English Education	Teacher Ed and Prof Development, Specific Levels & Methods
	260702	M.S.	Entomology	Zoology/Animal Biology
	141401	M.S.	Environmental Sciences	Environmental/Environmental Health Engineering
	010103	M.S.	Food & Business Economics	Agricultural Business and Management
	011001	M.Phil.	Food Science	Food Science and Technology
	011001	M.S.	Food Science	Food Science and Technology
	160901	M.A.	French	Romance Languages, Literatures, and Linguistics
	160901	M.A.T.	French	Romance Languages, Literatures, and Linguistics
	450701	M.A.	Geography	Geography and Cartography
	450701	M.Phil.	Geography	Geography and Cartography
	450701	M.S.	Geography	Geography and Cartography
	400601	M.Phil.	Geological Sciences	Geological and Earth Sciences/Geosciences
	400601	M.S.	Geological Sciences	Geological and Earth Sciences/Geosciences
	160501	M.A.	German	Germanic Languages, Literatures, and Linguistics
	160501	M.Phil.	German	Germanic Languages, Literatures, and Linguistics
	510701	M.S.	Health Care Management (W/ UMDNJ)	Health and Medical Administrative Services
	540101	M.A.	History	History
	521001	M.H.R.M.	Human Resource Management	Human Resources Management and Services
	143501	M.S.	Industrial & Systems Engineering	Industrial Engineering
	250101	M.L.S.	Information Science	Library Science and Administration
	110103	M.I.T.	Information Technology	Computer and Information Sciences, General
	160902	M.A.	Italian	Romance Languages, Literatures, and Linguistics
	160902	M.A.T.	Italian	Romance Languages, Literatures, and Linguistics
	160902	M.Phil.	Italian	Romance Languages, Literatures, and Linguistics
	380206	M.A.	Jewish Studies	Religion/Religious Studies

**STATE OF NEW JERSEY -- COMMISSION ON HIGHER EDUCATION
INVENTORY OF PROGRAMS OFFERED BY NEW JERSEY INSTITUTIONS OF HIGHER EDUCATION**

Rutgers University - New Brunswick Campus

DEGREE LEVEL	CIP CODE	DEGREE NAME	PROGRAM	CIP TITLE
Master's	521001	M.L.E.R.	Labor & Employment Relations	Human Resources Management and Services
	040601	M.L.A.	Landscape Architecture	Landscape Architecture
	131306	M.Ed.	Language Education	Teacher Ed and Prof Development, Specific Levels & Methods
	422806	M.Ed.	Learning/Cognition & Development	Clinical, Counseling and Applied Psychology
	250101	M.L.I.S.	Library & Information Science	Library Science and Administration
	259999	M.L.S.	Library Administration	Library Science, Other
	160102	M.A.	Linguistics	Linguistic, Comp, and Related Lang Studies and Services
	131399	M.Ed.	Literacy Education	Teacher Ed and Prof Development, Specific Levels & Methods
	230101	M.A.	Literatures In English	English Language and Literature, General
	230101	M.Phil.	Literatures In English	English Language and Literature, General
	140601	M.Phil.	Materials Science & Engineering	Ceramic Sciences and Engineering
	140601	M.S.	Materials Science & Engineering	Ceramic Sciences and Engineering
	270101	M.S.	Mathematics	Mathematics
	131311	M.Ed.	Mathematics Education	Teacher Ed and Prof Development, Specific Levels & Methods
	141901	M.E.	Mechanical & Aerospace Engineering	Mechanical Engineering
	141901	M.Phil.	Mechanical & Aerospace Engineering	Mechanical Engineering
	141901	M.S.	Mechanical & Aerospace Engineering	Mechanical Engineering
	141901	M.Phil.	Mechanics	Mechanical Engineering
	141901	M.S.	Mechanics	Mechanical Engineering
	512004	M.S.	Medicinal Chemistry	Pharmacy, Pharmaceutical Sciences, and Administration
	260502	M.S.	Microbial Biology	Microbiological Sciences and Immunology
	260503	M.Phil.	Microbiology & Molecular Genetics	Microbiological Sciences and Immunology
	260802	M.S.	Microbiology & Molecular Genetics	Genetics
	260802	M.S.	Microbiology & Molecular Genetics (W/ UMDNJ)	Genetics
	500901	M.A.	Music	Music
	500901	M.M.	Music	Music
	500901	M.Phil.	Music	Music
	131312	M.M.	Music Education	Teacher Ed and Prof Development, Specific Levels & Methods
	261503	M.S.	Neuroscience (W/ UMDNJ)	Neurobiology and Neurosciences
	301901	M.Phil.	Nutritional Sciences	Nutrition Sciences
	301901	M.S.	Nutritional Sciences	Nutrition Sciences
	400607	M.S.	Oceanography	Geological and Earth Sciences/Geosciences
	143701	M.S.	Operations Research	Operations Research
	512004	M.S.	Pharmaceutical Science	Pharmacy, Pharmaceutical Sciences, and Administration

STATE OF NEW JERSEY -- COMMISSION ON HIGHER EDUCATION
 INVENTORY OF PROGRAMS OFFERED BY NEW JERSEY INSTITUTIONS OF HIGHER EDUCATION

Rutgers University - New Brunswick Campus

DEGREE LEVEL	CIP CODE	DEGREE NAME	PROGRAM	CIP TITLE
<i>Master's</i>				
	380101	M.A.	Philosophy	Philosophy
	380101	M.Phil.	Philosophy	Philosophy
	400801	M.S.T.	Physics	Physics
	400899	M.Phil.	Physics & Astronomy	Physics
	400899	M.S.	Physics & Astronomy	Physics
	260901	M.S.	Physiology & Integrative Biology (W/ UMDNJ)	Physiology, Pathology and Related Sciences
	260301	M.Phil.	Plant Biology	Botany/Plant Biology
	260301	M.S.	Plant Biology	Botany/Plant Biology
	451001	M.A.	Political Science	Political Science and Government
	451001	M.Phil.	Political Science	Political Science and Government
	420101	Psy.M.	Professional Psychology	Psychology, General
	420101	M.A.	Psychology	Psychology, General
	420101	M.S.	Psychology	Psychology, General
	440501	M.P.A.P	Public Affairs & Politics	Public Policy Analysis
	512201	M.P.H.	Public Health (W/ UMDNJ)	Public Health
	440501	M.P.P.	Public Policy	Public Policy Analysis
	520801	M.Q.F.	Quantitative Finance	Public Policy Analysis
	131315	M.Ed.	Reading	Finance and Financial Management Services
	380201	M.A.	Religious Studies	Teacher Ed and Prof Development, Specific Levels & Methods
	130401	M.Ed.	School Business Administration	Religion/Religious Studies
	131101	M.Ed.	School Counseling and Counseling Psychology	Educational Administration and Supervision
	131316	M.Ed.	Science Education	Student Counseling and Personnel Services
	130901	M.Ed.	Social & Philosophical Foundations	Teacher Ed and Prof Development, Specific Levels & Methods
	131318	M.Ed.	Social Studies Education	Social and Philosophical Foundations of Education
	440701	M.S.W.	Social Work	Teacher Ed and Prof Development, Specific Levels & Methods
	451101	M.A.	Sociology	Social Work
	451101	M.Phil.	Sociology	Sociology
	160905	M.A.	Spanish	Sociology
	160905	M.A.T.	Spanish	Romance Languages, Literatures, and Linguistics
	131001	M.Ed.	Special Education	Romance Languages, Literatures, and Linguistics
	270501	M.Phil.	Statistics	Special Education and Teaching
	270501	M.S.	Statistics & Biostatistics	Statistics
	520301	M.Accy.	Taxation	Statistics
	500501	M.F.A.	Theater Arts	Accounting and Related Services
				Drama/Theatre Arts and Stagecraft

**STATE OF NEW JERSEY -- COMMISSION ON HIGHER EDUCATION
INVENTORY OF PROGRAMS OFFERED BY NEW JERSEY INSTITUTIONS OF HIGHER EDUCATION**

Rutgers University - New Brunswick Campus

DEGREE LEVEL	CIP CODE	DEGREE NAME	PROGRAM	CIP TITLE
Master's				
	500501	M.T.A.	Theater Arts	Drama/Theatre Arts and Stagecraft
	261004	M.S.	Toxicology	Pharmacology and Toxicology
	261004	M.S.	Toxicology (W/ UMDNJ)	Pharmacology and Toxicology
	500701	M.F.A.	Visual Arts	Fine and Studio Arts
	131319	M.Ed.	Vocational-Technical Education	Teacher Ed and Prof Development, Specific Levels & Methods
	050207	M.A.	Women's & Gender Studies	Ethnic, Cultural Minority, Gender, and Group Studies
Prof. Post-Mast.				
	130401	Ed.S.	Educational Administration & Supervision	Educational Administration and Supervision
	131202	Ed.S.	Elementary/Early Childhood Education	Teacher Ed and Prof Development, Specific Levels & Methods
	131306	Ed.S.	Language Education	Teacher Ed & Professional Development, Specific Subject Areas
	131399	Ed.S.	Literacy Education	Teacher Ed & Professional Development, Specific Subject Areas
	131311	Ed.S.	Mathematics Education	Teacher Ed & Professional Development, Specific Subject Areas
	131316	Ed.S.	Science Education	Teacher Ed & Professional Development, Specific Subject Areas
	130901	Ed.S.	Social & Philosophical Foundations	Social and Philosophical Foundations of Education
	131318	Ed.S.	Social Studies Education	Teacher Ed & Professional Development, Specific Subject Areas
	131319	Ed.S.	Vocational-Technical Education	Teacher Ed & Professional Development, Specific Subject Areas
Doctoral				
	450201	Ph.D.	Anthropology	Anthropology
	500703	Ph.D.	Art History	Fine and Studio Arts
	400499	Ph.D.	Atmospheric Science	Atmospheric Sciences and Meteorology
	260202	Ph.D.	Biochemistry	Biochemistry, Biophysics and Molecular Biology
	260202	Ph.D.	Biochemistry (W/ UMDNJ)	Biochemistry, Biophysics and Molecular Biology
	300101	Ph.D.	Biomaps: Program In Comp Biology & Molecular Biophysics	Biological and Physical Sciences
	140501	Ph.D.	Biomedical Engineering (W/ UMDNJ)	Biomedical/Medical Engineering
	260401	Ph.D.	Cell & Developmental Biology (W/ UMDNJ)	Cell/Cellular Biology and Anatomical Sciences
	261001	Ph.D.	Cellular & Molecular Pharmacology	Pharmacology and Toxicology
	261001	Ph.D.	Cellular & Molecular Pharmacology (W/ UMDNJ)	Pharmacology and Toxicology
	140701	Ph.D.	Chemical & Biochemical Engineering	Chemical Engineering
	400501	Ph.D.	Chemistry & Chemical Biology	Chemistry
	140801	Ph.D.	Civil & Environmental Engineering	Civil Engineering
	161200	Ph.D.	Classics	Classics and Classical Languages, Literatures, and Linguistics
	250101	Ph.D.	Communication/Information/Library Studies	Library Science and Administration
	160104	Ph.D.	Comparative Literature	Linguistic, Comparative, and Related Language Studies & Services
	110101	Ph.D.	Computer Science	Computer and Information Sciences, General

**STATE OF NEW JERSEY -- COMMISSION ON HIGHER EDUCATION
INVENTORY OF PROGRAMS OFFERED BY NEW JERSEY INSTITUTIONS OF HIGHER EDUCATION**

Rutgers University - New Brunswick Campus

DEGREE LEVEL	CIP CODE	DEGREE NAME	PROGRAM	CIP TITLE
Doctoral				
	131101	Ed.D.	Counseling Psychology	Student Counseling and Personnel Services
	422806	Ed.D.	Design of Learning Environments	Clinical, Counseling and Applied Psychology
	261301	Ph.D.	Ecology & Evolution	Ecology, Evolution, Systematics, and Population Biology
	450601	Ph.D.	Economics	Economics
	130101	Ph.D.	Education	Education, General
	130901	Ed.D.	Education/Culture & Society	Social and Philosophical Foundations of Education
	130401	Ed.D.	Educational Leadership	Educational Administration and Supervision
	130603	Ed.D.	Educational Statistics & Measurement	Educational Assessment, Evaluation, and Research
	141001	Ph.D.	Electrical & Computer Engineering	Electrical, Electronics and Communications Engineering
	010901	Ph.D.	Endocrinology and Animal Biosciences	Animal Sciences
	260702	Ph.D.	Entomology	Zoology/Animal Biology
	141401	Ph.D.	Environmental Sciences	Environmental/Environmental Health Engineering
	030104	Ph.D.	Environmental Sciences (w/ UMDNJ)	Natural Resources Conservation and Research
	011001	Ph.D.	Food Science	Food Science and Technology
	160901	Ph.D.	French	Romance Languages, Literatures, and Linguistics
	450701	Ph.D.	Geography	Geography and Cartography
	400601	Ph.D.	Geological Sciences	Geological and Earth Sciences/Geosciences
	160501	Ph.D.	German	Germanic Languages, Literatures, and Linguistics
	540101	Ph.D.	History	History
	143501	Ph.D.	Industrial & Systems Engineering	Industrial Engineering
	521002	Ph.D.	Industrial Relations & Human Resources	Human Resources Management and Services
	309999	Ph.D.	Interdisciplinary Program	Multi/Interdisciplinary Studies, Other
	160902	Ph.D.	Italian	Romance Languages, Literatures, and Linguistics
	131306	Ed.D.	Language Education	Teacher Ed & Professional Development, Specific Subject Areas
	160102	Ph.D.	Linguistics	Linguistic, Comparative, and Related Language Studies and Services
	131399	Ed.D.	Literacy Education	Teacher Ed & Professional Development, Specific Subject Areas
	230101	Ph.D.	Literatures In English	English Language and Literature, General
	140601	Ph.D.	Materials Science & Engineering	Ceramic Sciences and Engineering
	270101	Ph.D.	Mathematics	Mathematics
	131311	Ed.D.	Mathematics Education	Teacher Ed & Professional Development, Specific Subject Areas
	141901	Ph.D.	Mechanical & Aerospace Engineering	Mechanical Engineering
	141901	Ph.D.	Mechanics	Mechanical Engineering
	512004	Ph.D.	Medicinal Chemistry	Pharmacy, Pharmaceutical Sciences, and Administration
	260502	Ph.D.	Microbial Biology	Microbiological Sciences and Immunology

**STATE OF NEW JERSEY -- COMMISSION ON HIGHER EDUCATION
INVENTORY OF PROGRAMS OFFERED BY NEW JERSEY INSTITUTIONS OF HIGHER EDUCATION**

Rutgers University - New Brunswick Campus

DEGREE LEVEL	CIP CODE	DEGREE NAME	PROGRAM	CIP TITLE
Doctoral				
	260802	Ph.D.	Microbiology & Molecular Genetics	Genetics
	260802	Ph.D.	Microbiology & Molecular Genetics (W/ UMDNJ)	Genetics
	500903	D.M.A.	Music	Music
	500901	Ph.D.	Music	Music
	261503	Ph.D.	Neurosciences (W/ UMDNJ)	Neurobiology and Neurosciences
	301901	Ph.D.	Nutritional Sciences	Nutrition Sciences
	400607	Ph.D.	Oceanography	Geological and Earth Sciences/Geosciences
	143701	Ph.D.	Operations Research	Operations Research
	512004	Ph.D.	Pharmaceutical Science	Pharmacy, Pharmaceutical Sciences, and Administration
	380101	Ph.D.	Philosophy	Philosophy
	400899	Ph.D.	Physics & Astronomy	Physics
	260901	Ph.D.	Physiology & Integrative Biology (W/ UMDNJ)	Physiology, Pathology and Related Sciences
	040301	Ph.D.	Planning & Public Policy	City/Urban, Community and Regional Planning
	260301	Ph.D.	Plant Biology	Botany/Plant Biology
	451001	Ph.D.	Political Science	Political Science and Government
	420101	Psy.D.	Professional Psychology	Psychology, General
	420101	Ph.D.	Psychology	Psychology, General
	512201	Dr.P.H.	Public Health (W/ UMDNJ)	Public Health
	512201	Ph.D.	Public Health (W/ UMDNJ)	Public Health
	131316	Ed.D.	Science Education	Teacher Ed & Professional Development, Specific Subject Areas
	131318	Ed.D.	Social Studies Education	Teacher Ed & Professional Development, Specific Subject Areas
	440701	D.S.W.	Social Work	Social Work
	440701	Ph.D.	Social Work	Social Work
	451101	Ph.D.	Sociology	Sociology
	160905	Ph.D.	Spanish	Romance Languages, Literatures, and Linguistics
	131001	Ed.D.	Special Education	Special Education and Teaching
	270501	Ph.D.	Statistics & Biostatistics	Statistics
	131202	Ed.D.	Teacher Leadership	Teacher Ed and Prof Development, Specific Levels & Methods
	261004	Ph.D.	Toxicology	Pharmacology and Toxicology
	261004	Ph.D.	Toxicology (W/ UMDNJ)	Pharmacology and Toxicology
	131319	Ed.D.	Vocational-Technical Education	Teacher Ed & Professional Development, Specific Subject Areas
	050207	Ph.D.	Women's & Gender Studies	Ethnic, Cultural Minority, Gender, and Group Studies
Professional				
	512001	Pharm.D.	Pharmacy	Pharmacy, Pharmaceutical Sciences, and Administration

**STATE OF NEW JERSEY -- COMMISSION ON HIGHER EDUCATION
INVENTORY OF PROGRAMS OFFERED BY NEW JERSEY INSTITUTIONS OF HIGHER EDUCATION**

Rutgers University - Newark Campus

DEGREE LEVEL	CIP CODE	DEGREE NAME	PROGRAM	CIP TITLE
Bachelor's				
	520301	B.S.	Accounting	Accounting and Related Services
	050201	B.A.	African American and African Studies	Ethnic, Cultural Minority, Gender, and Group Studies
	510999	B.S.	Allied Health Technologies (W/ UMDNJ)	Allied Health Diagnostic, Intervention, & Treatment Professions
	050102	B.A.	American Studies	Area Studies
	302201	B.A.	Ancient & Medieval Civilizations	Classical and Ancient Studies
	450201	B.A.	Anthropology	Anthropology
	270301	B.A.	Applied Mathematics (W/ NJIT)	Applied Mathematics
	400801	B.A.	Applied Physics (W/ NJIT)	Physics
	500701	B.A.	Art	Fine and Studio Arts
	260101	B.A.	Biology	Biology, General
	260101	B.S.	Biology	Biology, General
	260101	B.A.	Biology (W/ NJIT)	Biology, General
	260101	B.S.	Biology (W/ NJIT)	Biology, General
	260301	B.A.	Botany	Botany/Plant Biology
	050105	B.A.	Central & Eastern European Studies	Area Studies
	400501	B.A.	Chemistry	Chemistry
	511005	B.S.	Clinical Laboratory Sciences (W/ UMDNJ)	Clinical/Med Lab Science/Research & Allied Professions
	110101	B.A.	Computer Science (W/ NJIT)	Computer and Information Sciences, General
	430104	B.S.	Criminal Justice	Criminal Justice and Corrections
	450601	B.A.	Economics	Economics
	230101	B.A.	English	English Language and Literature, General
	030104	B.S.	Environmental Sciences (W/ NJIT)	Natural Resources Conservation and Research
	520801	B.S.	Finance	Finance and Financial Management Services
	160901	B.A.	French	Romance Languages, Literatures, and Linguistics
	400601	B.A.	Geology	Geological and Earth Sciences/Geosciences
	400601	B.S.	Geology	Geological and Earth Sciences/Geosciences
	143901	B.S.	Geoscience Engineering (W/ NJIT)	Geological/Geophysical Engineering
	160501	B.A.	German	Germanic Languages, Literatures, and Linguistics
	540101	B.A.	History	History
	540101	B.A.	History (W/ NJIT)	History
	110401	B.S.	Human Computer Interaction (W/ NJIT)	Information Science/Studies
	110401	B.A.	Information Systems (W/ NJIT)	Information Science/Studies
	309999	B.A.	Interdisciplinary/Individual/Interdepartmental Major	Multi/Interdisciplinary Studies, Other
	309999	B.S.	Interdisciplinary/Individual/Interdepartmental Major	Multi/Interdisciplinary Studies, Other

STATE OF NEW JERSEY -- COMMISSION ON HIGHER EDUCATION
INVENTORY OF PROGRAMS OFFERED BY NEW JERSEY INSTITUTIONS OF HIGHER EDUCATION

Rutgers University - Newark Campus

DEGREE LEVEL	CIP CODE	DEGREE NAME	PROGRAM	CIP TITLE
Bachelor's				
	160902	B.A.	Italian	Romance Languages, Literatures, and Linguistics
	090401	B.A.	Journalism	Journalism
	520201	B.S.	Management	Business Administration, Management and Operations
	521201	B.S.	Management Information Systems	Management Information Systems and Services
	521401	B.S.	Marketing	Marketing
	270101	B.A.	Mathematics	Mathematics
	511005	B.S.	Medical Technology	Clinical/Med Lab Science/Research & Allied Professions
	510999	B.S.	Medical Imaging Sciences (W/ UMDNJ	Allied Health Diagnostic, Intervention, & Treatment Professions
	500901	B.A.	Music	Music
	513801	B.S.	Nursing	Reg Nursing, Nurse Admin, Nursing Res & Clinical Nurse
	380101	B.A.	Philosophy	Philosophy
	400801	B.A.	Physics	Physics
	400801	B.A.	Physics [Dual W/ NJIT B.S. In Industrial Engineering]	Physics
	451001	B.A.	Political Science	Political Science and Government
	160904	B.A.	Portuguese & Lusophone World Studies	Romance Languages, Literatures, and Linguistics
	420101	B.A.	Psychology	Psychology, General
	449999	B.A.	Public Service	Public Administration and Social Service Professions, Other
	050203	B.A.	Puerto Rican Studies	Ethnic, Cultural Minority, Gender, and Group Studies
	301501	B.A.	Science/Technology & Society (W/ NJIT)	Science, Technology and Society
	440701	B.A.	Social Work	Social Work
	451101	B.A.	Sociology	Sociology
	160905	B.A.	Spanish	Romance Languages, Literatures, and Linguistics
	520203	B.S.	Supply Chain and Marketing Science	Business Administration, Management and Operations
	500501	B.A.	Theater	Drama/Theatre Arts and Stagecraft
	500602	B.A.	Video Production	Film/Video and Photographic Arts
	500701	B.F.A.	Visual Arts	Fine and Studio Arts
	050207	B.A.	Women's Studies	Ethnic, Cultural Minority, Gender, and Group Studies
	260701	B.A.	Zoology	Zoology/Animal Biology
	300101	Grad.Cert.	Science and Technology Management	Biological and Physical Sciences
Post-Baccalaureate				
	520301	M.Accy.	Accountancy	Accounting and Related Services
Master's				
	50102	M.A.	American Studies	Area Studies
	400801	M.S.	Applied Physics (W/ NJIT)	Physics

STATE OF NEW JERSEY -- COMMISSION ON HIGHER EDUCATION
 INVENTORY OF PROGRAMS OFFERED BY NEW JERSEY INSTITUTIONS OF HIGHER EDUCATION

Rutgers University - Newark Campus

DEGREE LEVEL	CIP CODE	DEGREE NAME	PROGRAM	CIP TITLE
<i>Master's</i>				
	261501	M.S.	Behavioral & Neural Sciences	Neurobiology and Neurosciences
	260101	M.S.	Biology	Biology, General
	260101	M.S.	Biology (W/ NJIT)	Biology, General
	300101	M.B.S.	Business and Science	Biological and Physical Sciences
	400501	M.S.	Chemistry	Chemistry
	261103	M.S.	Computational Biology (W/ NJIT)	Biostatistics, Bioinformatics, and Computational Biology
	231302	M.F.A.	Creative Writing	Rhetoric and Composition/Writing Studies
	430104	M.A.	Criminal Justice	Criminal Justice and Corrections
	450601	M.A.	Economics	Economics
	230101	M.A.	English	English Language and Literature, General
	400601	M.S.	Environmental Geology	Geological and Earth Sciences/Geosciences
	030104	M.S.	Environmental Science (W/ NJIT)	Natural Resources Conservation and Research
	450901	M.S.	Global Affairs	International Relations and National Security Studies
	540101	M.A.	History	History
	540101	M.A.T.	History	History
	540101	M.A.	History (W/ NJIT)	History
	540101	M.A.T.	History (W/ NJIT)	History
	110103	M.I.T.	Information Technology	Computer and Information Sciences, General
	500910	M.A.	Jazz History & Research	Music
	240101	M.A.L.S.	Liberal Studies	Liberal Arts and Sciences, General Studies and Humanities
	520201	M.B.A.	Management	Business Administration, Management and Operations
	513808	M.S.	Nursing	Reg Nursing, Nurse Admin, Nursing Res & Clinical Nurse
	300501	M.A.	Peace and Conflict Studies	Peace Studies and Conflict Resolution
	451001	M.A.	Political Science	Political Science and Government
	520301	M.B.A.	Professional Accounting	Accounting and Related Services
	420101	M.A.	Psychology	Psychology, General
	440401	M.P.A.	Public Administration	Public Administration
	512201	M.P.H.	Public Health (W/ UMDNJ & NJIT)	Public Health
	520801	M.Q.F.	Quantitative Finance	Finance and Financial Management Services
	440701	M.S.W.	Social Work	Social Work
	520301	M.Accy.	Taxation	Accounting and Related Services

**STATE OF NEW JERSEY -- COMMISSION ON HIGHER EDUCATION
INVENTORY OF PROGRAMS OFFERED BY NEW JERSEY INSTITUTIONS OF HIGHER EDUCATION**

Rutgers University - Newark Campus

DEGREE LEVEL	CIP CODE	DEGREE NAME	PROGRAM	CIP TITLE	
Doctoral	050102	Ph.D.	American Studies	Area Studies	
	400801	Ph.D.	Applied Physics (W/ NJIT)	Physics	
	261501	Ph.D.	Behavioral & Neural Sciences	Neurobiology and Neurosciences	
	260101	Ph.D.	Biology	Biology, General	
	260101	Ph.D.	Biology (W/ NJIT)	Biology, General	
	400501	Ph.D.	Chemistry	Chemistry	
	430104	Ph.D.	Criminal Justice	Criminal Justice and Corrections	
	030104	Ph.D.	Environmental Science (W/ NJIT)	Natural Resources Conservation and Research	
	450901	Ph.D.	Global Affairs	International Relations and National Security Studies	
	520201	Ph.D.	Management	Business Administration, Management and Operations	
	279999	Ph.D.	Mathematical Sciences (W/ NJIT)	Mathematics and Statistics, Other	
	261503	Ph.D.	Neurosciences (W/ UMDNJ)	Neurobiology and Neurosciences	
	513808	Ph.D.	Nursing	Reg Nursing, Nurse Admin, Nursing Res & Clinical Nurse	
	513818	D.N.P.	Nursing Practice	Reg Nursing, Nurse Admin, Nursing Res & Clinical Nurse	
	420101	Ph.D.	Psychology	Psychology, General	
	440401	Ph.D.	Public Administration	Public Administration	
	459999	Ph.D.	Urban Systems (W/ NJIT & UMDNJ)	Social Sciences, Other	
	Professional	220101	J.D.	Law	Law

Rutgers, The State University of New Jersey

Institutional Profile Report

Section H

Major Research and Public Service Activities

MAJOR RESEARCH AND PUBLIC SERVICE ACTIVITIES**R&D EXPENDITURES: YEAR 2012**

	Amount (\$)
Federally Financed Academic R&D Expenditures	301,294,000
Institutionally Financed Academic R&D Expenditures	73,684,000
Externally Financed Academic R&D Expenditures	98,530,000
Total Academic R&D Expenditures	473,508,000

Note: Dollar amount as reported to the National Science Foundation (NSF)
on Form #411
(*Higher Education Research and Development Survey FY2011*).



RESEARCH CENTERS

Please note that this is a listing of public sites for research centers on the Camden, Newark and New Brunswick/Piscataway campuses. It does not include departmental web sites or individual staff, faculty or student web pages.

A

Abbott Leadership Institute
Advanced Biotechnology and Medicine (CABM), Center for
Advanced Energy Systems, Center for
Advanced Food Technology, Center for
Advanced Infrastructure and Transportation, Center for
Advanced Materials via Immiscible Polymer Processing, Center for
African Studies, Center for
Agricultural Experiment Station, New Jersey
AIDS Policy Research Group
Air Pollution Training Program
Alcohol Studies, Center of
Alexandria Project Laboratory
American Women and Politics, Center for
Applied Psychology, Center for
Aresty Research Center for Undergraduates
Asian American Cultural Center

B

Behavioral Health Services and Criminal Justice Research, Center for
BioMaPS (Biological, Mathematical, and Physical Sciences Interfaces)
Institute for Quantitative Biology
Biomaterials, New Jersey Center for
Biophysical Pathology, Center for
Blueberry and Cranberry Research and Extension, Phillip E. Marucci Center for
Boggs Center on Developmental Disabilities, The
Brain Health Institute
Brodsky Center for Innovative Editions
Business District Management, Institute of

C

CamC5es Institute Center for Portuguese Language
Cancer Prevention Research, Center for
Catalyst Manufacturing Science and Engineering Center
Catalyst Research Center, Rutgers
Cell and DNA Repository, Rutgers University
Center for the Arts, Rutgers-Camden
Ceramic, Composite and Optical Materials Center
Child Health Institute of New Jersey
Civic and Law-Related Education, NJ Center for



Civic Engagement, Ralph W. Voorhees Center for
 Clifford E. and Meldo C. Snyder Research & Extension Farm –
 Rutgers Center for Sustainable Agriculture
 Cloud and Autonomic Computing at Rutgers, Center for
 Cognitive Science, Rutgers Center for
 Collaborative Neuroscience, W.M. Keck Center for
 Command, Control, and Interoperability Center for Advanced Data Analysis
 Community Development Institute
 Community Leadership, Center for
 Computational and Integrative Biology, Center for
 Computational Biomedicine Imaging and Modeling, Center for
 Computer Science Research, Laboratory for
 Confucius Institute at Rutgers University
 Continuing Professional Development, Center for
 Controlled Environment Agriculture, Center for
 Cooperative Extension, Rutgers
 Counter Corruption Studies, Rutgers Institute on
 Crime Prevention Service
 Cultural Analysis, Center for
 Culture and Politics of Democracy, Walt Whitman Center for the

D

Deep-Sea Ecology and Biotechnology, Center for
 Dermal Research, Center for
 Developmental Disabilities, Douglass Center for
 Discrete Mathematics and Theoretical Computer Science, Center for
 Distributed Laboratory for Digital Libraries, Rutgers
 Douglass Project for Rutgers Women in Math, Science, and Engineering
 Dynamic Data Analytics, Center for

E

E-Governance Institute
 Eagleton Center for Public Interest Polling
 Eagleton Institute of Politics
 Early Education Research, National Institute for
 Eastern Regional Radon Training Center
 Economics and Children, Center for
 Edison Papers, Thomas A.
 Education and Research on Therapeutics, Center for
 Education Law and Policy, Institute for
 Effective Education, Institute for
 Effective School Practices, Center for
 Electroceramics Research Group, The
 Elizabeth Cady Stanton and Susan B. Anthony Papers Project
 Emergent Materials, Rutgers Center for
 Emerging Threats in the 21st Century, Rutgers Center for
 Energy, Economic & Environmental Policy, Center for
 Environmental and Occupational Health Sciences Institute
 Environmental Prediction, Center for
 Equine Science Center



Ethical Leadership, Institute for
 Ethnicity, Culture, and the Modern Experience, Institute for
 European Studies, Center for
 Excellence for Radioactive Ion Beam Studies for Stewardship Science,
 Center of
 Executive Leadership in Government, Center for
 Exercise and Aging, Center for

F

Families, Institute for
 Family Business Institute
 Family Involvement in Schools, Center for
 Fiber Optic Materials Research Program
 Film Co-op/New Jersey Media Arts Center, Rutgers
 Financial Institutions Center, Rutgers
 Food Innovation Center
 Food Policy Institute
 Food, Nutrition, and Health, New Jersey Institute for
 Forest Center, Hutcheson Memorial
 Fruit & Ornamental Research Extension Center, Rutgers

G

Gambling Studies, Center for
 Genocide and Human Rights, Center for the Study of
 Geological Survey Core Repository, Rutgers/New Jersey
 Geology Museum
 Global Advancement and International Affairs, Center for
 Global Institute for BioExploration, The
 Global Services, Center for
 Government Compliance and Ethics, Center for
 Government Services, Center for
 Governmental Accounting Education and Research, Center for
 Green Building, Rutgers Center for

H

Haskin Shellfish Research Laboratory
 Health and Human Services Center, Rutgers
 Health Beliefs and Behavior, Center for the Study of
 Health Services Research on Pharmacotherapy, Chronic Disease Management,
 and Outcomes, Center for
 Health, Health Care Policy and Aging Research, Institute for
 Heldrich Center for Workforce Development, John J.
 Historical Analysis, Rutgers Center for
 HIV Prevention Community Planning Support and Development Initiative
 (EJBSPPP)
 Holocaust Resource Center, Herbert and Leonard Littman Families
 Human Development and Aging, Center of
 Human Evolutionary Studies (CHES), Center for
 Human Genetics Institute of NJ
 Humanities, Mid-Atlantic Research Center for the (MARCH)



Hungarian Studies, Institute of

I

IEEE History Center
Immunity and Inflammation, Center for
Improving Student Achievement, Rutgers University Institute for
Industrial Assessment Center
Infectious and Inflammatory Diseases (I3D), Institute for
Information Management, Integration, and Connectivity, Center for
Information Policy & Law, Institute for
Initiative for Regional and Community Transformation
Innovative Ventures of Emerging Technologies, Center for
Institutional Governance, Center for
Intelligent Cyberphysical Systems
Interdisciplinary Studies in Information Policy and Security
Interfacial Molecular Science Laboratory
International Pharmaceutical Economics and Policy, Center for
International Social Work, Center for

J

Jazz Studies, Institute of
Jewish Life, Allen and Joan Bildner Center for the Study of
Journalism Resources Institute

K

Knowledge Institute, The

L

Latin American Studies, Center for
Latino Arts and Culture, Center for
Law and Philosophy, Institute for
Learning, Robert B. Davis Institute for
Lipid Research, Rutgers Center for
Local Democracy Partnership Program

M

Management and Executive Development, Institute for
Management Development, Center for
Margery Somers Foster Center
Marine and Coastal Sciences, Institute of
Marine Biotechnology, Center for
Materials Theory, Center for
Math and Science Learning Center
Mathematical Sciences Research, Center for
Mathematics, Science and Computer Education, Center for
Meadowlands Studies, Institute for
Media Studies, Center for
MetroMath
Metropolitan Studies, Joseph C. Cornwall Center for
Micro Electronics Research Laboratory



Middle Eastern Studies, Center for
Minor Crop Pest Management-Technology Center for IR-4 Headquarters
Molecular and Behavioral Neuroscience, Center for

N

Nanostructured Materials Research, Laboratory for
Nanotechnology, Institute for Advanced Materials, Devices and
National Transit Institute
Negotiation and Conflict Resolution, Center for
Neighborhood and Brownfields Redevelopment, National Center for
Neurodegenerative and Neuroimmunologic Diseases, Center for
New Jersey Collaborating Center for Nursing
New Jersey Mathematics Coalition
New Jersey Public Policy Research Institute
NJMS Institute of Genomic Medicine
NJMS Sarcoidosis Center
Noise Technical Assistance Center, Rutgers
Nonlinear Analysis, Center for
Nonprofit Management and Governance, Center for
Northeast Institute for Evidence Synthesis and Translation
Northeast Structural Genomics Consortium
Nucleic Acid Database Project

O

Online & Hybrid Learning and Instructional Technology Team, Center for
Operations Research, Rutgers Center for
Oral History Archives of World War II
Organizational Development and Leadership, Center for
Osher Lifelong Learning Institute
Ozone Research Center

P

Paul Robeson Cultural Center
Pharmaceutical Management Studies, Blanche & Irwin Lerner Center for
Philosophy and the Sciences, Rutgers University Center for
Police Institute
Policy Research and Public Service, Forum for
Protein Data Bank
Public Affairs, The Senator Walter Rand Institute for Public Affairs
Public Performance, National Center for
Public Security, Rutgers Center on

R

R/ECON Forecasting Service
Race & Ethnicity, Center for
Remote Sensing and Spatial Analysis, Grant F. Walton Center for
Research Collaboratory for Structural Bioinformatics
Research in Financial Services, Whitcomb Center for
Research in Regulated Industries, Center for
Research on Women, Institute for



Rutgers Accounting Research Center/ Continuous Auditing and Reporting Lab
Rutgers Agricultural Research & Extension Center
Rutgers Arts Center
Rutgers British Studies Center
Rutgers Discovery Informatics Institute (RDI2)
Rutgers EcoComplex - Rutgers Environmental Research & Extension
Rutgers Energy Institute
Rutgers Institute for Science and Technology Leadership in Africa
Rutgers Plant Science Research & Extension Farm
Rutgers Regional Report / State Data Center
Rutgers University Brain Imaging Center

S

School and Community-Based Research and Education, Center for
Small Business Development Center Rutgers-Camden, New Jersey
Small Business Development Center Rutgers-Newark, New Jersey
Smoking Cessation Laboratory, Rutgers
Social and Character Development at Rutgers, Center for
Spinal Cord Injury Project
State Constitutional Studies, Center for
State Health Policy, Center for
Statistical Consulting, Office of
Stem Cell Institute of New Jersey
Stem Cell Research Center
Strategic Human Resource Leadership Council
Structured Organic Particulate Systems, Engineering Research Center for
Supply Chain Management, Center for
Surface Modification, Laboratory for
Survey Research, Bloustein Center for
Sustainable Materials, Center for
Systems and Control, Rutgers Center for

T

Teaching Advancement and Assessment Research, Center for
Technology Campus, Inc., Rutgers-Camden
Technology Management Research Center
Thai Fogarty ITREOH (Int'l Training & Research in Environmental and
Occupational Health) Center
The Autism Center
Transportation Center, Alan M. Voorhees
Transportation Safety, Security and Risk, Center for
Turfgrass Science, Rutgers Center for

U

Urban Entrepreneurship & Economic Development, The Center for
Urban Policy Research Press, Center for
Urban Policy Research, Center for
Urban Research and Education, Center for
Urban Restoration Ecology, Center for



V

Vector Biology, Center for
Violence Against Women and Children, Center on
Vision Research, Laboratory of
Visualization Lab

W

Waksman Institute of Microbiology
Water Resources Research Institute, New Jersey
Weather Center, Rutgers
Wildlife Damage Control Center
Wireless Information Network Laboratory (WINLAB)
Women and Art, Institute for
Women and Work, Center for
Women in Science, Engineering and Mathematics, Office for the Promotion of
Women's Global Leadership, Center for
Women's Leadership, Institute for
Workforce Development, John J. Heldrich Center for
World Languages Institute, Rutgers University

Y

Youth Center for Outdoor Education, Lindley G. Cook 4-H
Youth Education and Employment Success Center
Youth Sports Research Council



Research News

Multimedia Feature

Rutgers Camp Helps Kids Focus

Computers, video games, television and smartphones can lead to over-stimulated children who don't know what it's like to focus on one task at a time. Creating art can help children learn to pay attention to details.

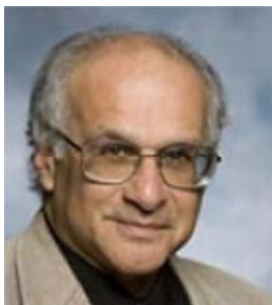
How Do Goals Motivate Us?

Rutgers professor of psychology, Gretchen Chapman is studying how goals help motivate us and affect how hard we work to achieve them.

The Science Behind Singing

How do humans produce the sounds we call singing? Rutgers associate professor of Voice Eduardo Chama explains the science behind singing, including how the vocal cords work.

Featured Expert:



Paul Lioy

Paul Lioy, director of exposure science, Environmental and Occupational Health Sciences Institute; professor of Environmental and Occupational Medicine, Robert Wood Johnson Medical School

Lioy is a leading expert in personal exposure to toxins. His current research examines human exposure to engineered nanotechnology consumer products and exposure of athletes to artificial turf used on athletic fields.

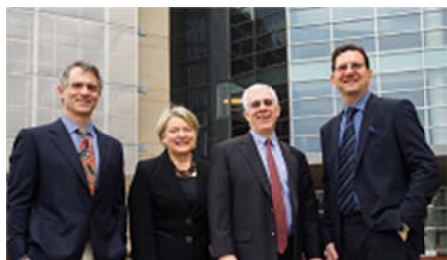
Anthropology



Rutgers Professor Angelique Haugerud Asks Who is Rich, Who is Poor, and Why

The questions of wealth, poverty and equity are at the core of Angelique Haugerud's work, whether she's studying coffee farmers in Kenya or "Billionaires" in America.

Health and Medicine



New Jersey Medical School Creates Institute for Infectious and Inflammatory Diseases

Three centers of excellence are combining for new approaches to detection, treatment and prevention.

Humanities



Rutgers Researcher Links Homosexual Stereotypes to Peter Pan

The depiction of contemporary gay culture is “youth-obsessed” and hedonistic may have its roots in Victorian-era sexology, Dorian Gray and Peter Pan.

Can't Find a Parking Spot?

Researchers at the Wireless Information Network Laboratory (WINLAB) at Rutgers University are developing a device that is designed to find parking spaces in urban areas.

Research & Economic Development

Rutgers, Thomas Jefferson University and UNF Join NAI

Rutgers Receives Additional Patents for Green Technology to Produce Concrete and Other Materials

Two Technologies With Ties to Rutgers Win R&D 100 Awards

NIMH Awards \$44.5 Million Grant to RUCDR Infinite Biologics

Two Technologies With Ties to Rutgers Win R&D 100 Awards

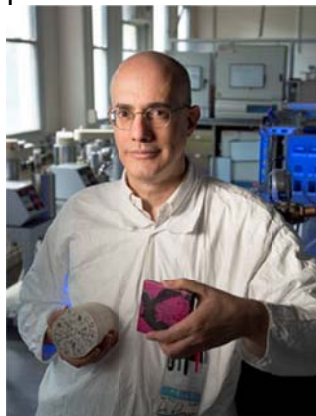
Green process for producing concrete, software for managing big data earn prestigious honors

NEW BRUNSWICK, N.J. — Two technologies developed with contributions by professors and graduate students at Rutgers have been selected for *R&D Magazine's* R&D 100 Awards.

The honors, given for revolutionary technologies newly introduced to the market, span industrial, academic and government-sponsored research.

One winner is a Rutgers technology licensed to Solidia Technologies of Piscataway that dramatically reduces carbon dioxide emissions in the production of cement and concrete products. The inventors are [Richard Riman](#), Rutgers distinguished professor of materials science and engineering and Solidia's founder, and Vahit Atakan, Solidia's R&D director and a former doctoral student in Riman's lab.

The second winner is ADIOS: Adaptable I/O System for Big Data, developed by a group including [Manish Parashar](#), director of the Rutgers Discovery Informatics Institute and professor of electrical and computer engineering, and four of his graduate students.



Richard Riman
Nick Romanenko

[High Res](#)

Solidia's patented technologies have the potential to reduce greenhouse gas emissions from cement and concrete industries by up to 70 percent. Requiring only modest changes to current processes, the technology makes solids out of packed powders without using a high-temperature kiln or furnace. The process also has broad applications in the ceramics industry, producing innovative materials that offer greater strength and durability.

“This is very much a green process for numerous reasons, particularly because it requires far lower temperatures than the conventional method and it provides a new means for carbon sequestration,” said Riman.

Solidia is marketing its process in the global \$1 trillion concrete market and the \$300 billion cement market. The company has raised financing from Kleiner Perkins Caufield & Byers, Bright Capital, BASF and BP.

ADIOS is a collection of software services to manage big data for extreme scale computing in research areas such as combustion, fusion and sub-surface modeling in oil and gas exploration. Rutgers’ primary contribution is “DataSpaces,” a framework that provides essential services for managing and processing data produced by large-scale simulations, while addressing issues related to scale, performance and energy costs. It essentially enables scientists to examine and query data while their large-scale simulations are producing it. ADIOS and DataSpaces are being used by a large number of applications in business and academia.



Manish Parashar
Nick Romanenko

High Res

“While it’s fun to do the research, it’s good to see the work having an impact, and that’s why this recognition is extremely satisfying,” Parashar said. “It provides evidence that the research we’re doing at Rutgers is enabling new science and new insights in important areas.”

Parashar has collaborated with the project lead, Scott Klasky of the Oak Ridge National Laboratory, since they were post-doctoral fellows in 1994 at the University of Texas, Austin. Georgia Institute of Technology and North Carolina State University also contributed to the development of ADIOS. The Rutgers team working on ADIOS with Parashar includes Hoang Bui, a post-doctoral fellow, and doctoral students Tong Jin, Qian Sun, and Fan Zhang.

“We are thrilled to see two technologies tied to Rutgers appear among the R&D 100 for 2013, particularly given the impressive nature of the scientific breakthroughs chosen this year and the history of previous winners succeeding in the marketplace,” said

Kenneth J. Breslauer, Rutgers interim vice president for research and economic development and Linus C. Pauling professor of chemistry and chemical biology. “Rik Riman and Manish Parashar are two outstanding Rutgers



Research at Rutgers–New Brunswick

A Stronger Rutgers



Rutgers has stood among the United States' leading institutions of higher learning for more than two centuries. Now, with the recent addition of seven renowned health sciences schools and a number of clinics, centers, and institutes we're even stronger.

This grand integration creates an academic dynamism that translates into better lives for the people we serve as The State University of New Jersey. [Learn more.](#)

Discovering How Coral Make Their Skeletons



Researcher Tali Mass and her colleagues at the Rutgers Institute of Marine and Coastal Sciences show that specific proteins produced by corals can form limestones in test tubes. [Learn more.](#)

Research Heft at Rutgers–New Brunswick

Rutgers, The State University of New Jersey, contains the state's most extensive network of laboratories, research facilities, and health service centers and is one of only 62 universities in

the Association of American Universities, a group comprising North America's leading research universities. Rutgers–New Brunswick accounts for much of the research at Rutgers. Just how big is our reach?

- 36 Rutgers–New Brunswick faculty are [members of the National Academy of Sciences](#), the National Academy of Engineering, and the Institute of Medicine, America's top experts on critical national issues.
- \$362 million in externally sponsored research grants and contracts were logged at Rutgers–New Brunswick in fiscal year 2012, accounting for 91 percent of sponsored research at Rutgers University.
- 175-plus [centers and institutes](#) at the Rutgers–New Brunswick Campus target a range of issues.

As New Jersey's premier public academic research powerhouse, Rutgers–New Brunswick creates knowledge, fuels economic progress, and improves lives in our state and beyond.

Out Ahead

Whether it's a question for our times—health care, preschool education, cancer prevention, clean energy—or a question for the ages—the origins of the universe, the biochemistry of love, the lives of early humans—researchers at Rutgers–New Brunswick are pursuing answers and pushing boundaries.

Their findings make waves within the academic community and have influence in communities down the block and around the world. The pursuits of top faculty and their teams define us as a research university and elevate us to the realm of the explorers, the trailblazers, the discoverers.

A Small Sampling of Our Distinctive Research

Collaborative Spinal Cord Research

It's where global research collaboration on spinal cord injuries was pioneered. The [W.M. Keck Center for Collaborative Neuroscience](#) is led by Wise Young, a world leader in neuroscience and the researcher behind the China SCINet spinal cord treatment clinical trials featured in *Nature*.



The Vanguard of Women's Studies

Home to the top-ranked women's and gender history program in the nation, Rutgers–New Brunswick is where the [papers of suffragists Susan B. Anthony and Elizabeth Cady Stanton](#) are archived and studied. Photograph by J.H. Kent. Prints and Photographs Division, Library of Congress, LC-USZ61-791



Mathematical Insights

The internationally acclaimed [Center for Discrete Mathematics and Theoretical Computer Science \(DIMACS\)](#) is one of the original National Science Foundation Science and Technology Centers. DIMACS's work leads to advances in genetics, evolutionary biology, epidemiology, and homeland security.



Turfgrass Development

Much of America's commercially available grass seed originates in turfgrass research at Rutgers–New Brunswick. Grasses developed at the [Center for Turfgrass Science](#) are on the White House lawn, New York's Central Park, and at golf courses, athletic fields, parks, and elsewhere (including, more likely than not, your own lawn).



Measuring the Ocean

When the federal government sought coordinated access to real-time data on the Gulf oil spill, the [Rutgers Coastal Ocean Observation Laboratory](#) got the call. Its data center and undersea gliders are the state-of-the-art in robotic ocean exploration.



The World's DNA Library

The [Rutgers University Cell and DNA Repository](#) is the largest university-based repository of its kind in the world. It is a key national center for the study of genetics and mental health, drug abuse, alcoholism, diabetes, and digestive and kidney diseases



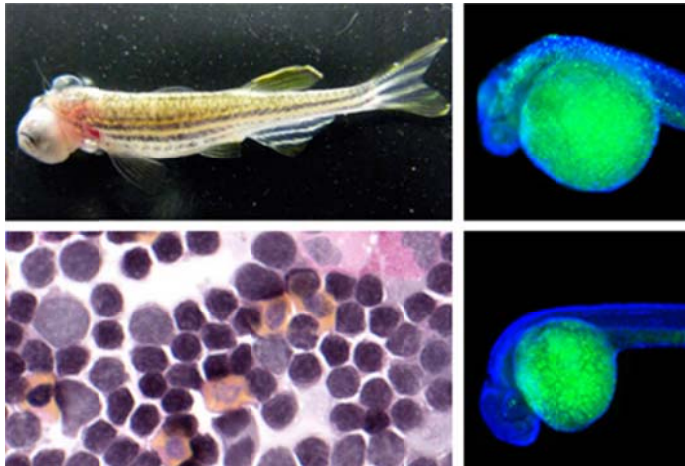
Guardian of the Roads

The [Center for Advanced Infrastructure and Transportation](#) is a national leader in transportation safety and innovation. A \$17.9 million U.S. Commerce Department grant will lead to technologies for early detection of flaws in bridge decks—the surfaces on which vehicles travel—saving money and keeping travelers safer.



Genetic Defects in Cancer Cells

Led by Hatem Sabaawy, investigators at the Cancer Institute of New Jersey's [zebrafish laboratory](#) use models of the fish to map the common genetic defects in cancer, identify new small molecules for targeted treatment, and predict each cancer patient's response to therapy in precision medicine trials.



A Small Sampling of Our Distinctive Research

Collaborative Spinal Cord Research

It's where global research collaboration on spinal cord injuries was pioneered. The [W.M. Keck Center for Collaborative Neuroscience](#) is led by Wise Young, a world leader in neuroscience and the researcher behind the China SCINet spinal cord treatment clinical trials featured in *Nature*.

Calling All Hypothesizers

Are you an undergraduate? A graduate student? A faculty member? A staff member? A business owner? A public official? Someone with a great research question? Our stellar faculty will partner with you, as together you seek answers and move humanity forward. Thinkers thrive here.

[Undergraduate Research](#) ▶

It's different at a research university. You don't just learn about theories and discoveries in the classroom. Undergraduates will find plenty of opportunities at Rutgers–New Brunswick to work shoulder-to-shoulder with groundbreaking faculty as they postulate new theories and make discoveries.

[Graduate Research](#) ▶

As a public research university, Rutgers places graduate student research at the very core of our mission. The breadth and quality of Rutgers' research and faculty draw graduate and professional students to Rutgers–New Brunswick from around the globe.

[Centers and Institutes](#) ▶

More than 175 centers and institutes cover diverse interests across disciplines. Many are top-flight national and international hotbeds of innovation.

[Faculty and Staff Research Resources](#) ▶

The right resources help big-thinking faculty and staff tackle a host of research questions and drive Rutgers–New Brunswick's success in research.

[Business and Industry Research Resources](#) ▶

Rutgers–New Brunswick is a research wellspring for business and industry. Bring us your ideas and see how we can help develop them or find out about technologies we've developed that you can take to market.



Rutgers-Newark



University Professor Stuart Deutsch is an expert on land use, urban development, and the environment —Stuart Deutsch , University Professor

Research, Centers & Institutes



The premiere urban research university

At Rutgers-Newark, we have a variety of centers and institutes, as well as academic departments, that help create new knowledge in a broad range of academic disciplines, provide top-quality education to our students, and share academic and intellectual resources with the citizens of New Jersey and beyond.

Learn about our research centers and institutes in:

Business



Visit the Rutgers Business School website for a complete list of all RBS institutes and research centers.

Law, Criminal Justice & Public Affairs



Scholars are seeking knowledge to better society, structures and policies.

Science, Technology & Health



From Information technology to Parkinson's disease, R-N researchers are seeking answers.

Arts & Humanities



Research as diverse as it is vital to R-N's missions of service, teaching and creating knowledge.

Inside the Brain



Scientists at Rutgers conduct path-breaking research in every area of neuroscience research discovery.

Support for Research



Undergraduate Research



At a research university, you learn from great professors who are pushing and prodding the boundaries of human knowledge every day.

Rutgers Launches Neuroscience Consortium



More than 350 researchers will work together to unlock the mysteries of life-threatening nervous system disorders.



Centers & Institutes



The best ideas arise from collaboration, and Rutgers-Camden is an incubator for new knowledge. Our centers and institutes support the collaborative work of faculty, students, and visiting scholars as they generate new knowledge that inspires and redefines their fields. These centers also provide exceptional responses to the challenges facing citizens in New Jersey and around the globe.

THE ARTS

Rutgers–Camden delivers opportunities for learning and personal enrichment by providing performances, exhibitions, educational programs, and community projects that inspire an appreciation of the arts.

The Rutgers–Camden [Center for the Arts](#) produces and presents year-round programs in visual arts, performing arts, and arts education to advance the role of the arts in pre-K through 12th-grade education.

BUSINESS

Economic growth and scholarship in business-related disciplines advance thanks to the innovative work and services at these Rutgers–Camden centers.

The [Rutgers Institute for Management and Executive Development](#) has worked with clients in nearly every industry to provide advanced learning opportunities that strengthen the leadership capacity of both individuals and their organizations.

The [Rutgers Small Business Development Center](#) is part of a statewide network that provides comprehensive small business counseling and educational opportunities to small business owners and potential owners throughout New Jersey.

THE HUMANITIES AND SOCIAL SCIENCES

Rutgers–Camden takes the lead in numerous initiatives focused research and service in childhood studies and public history, developing new models for advanced work in both fields.

The [Center for Children and Childhood Studies](#) promotes understanding, enrichment and the recognition of the significance of the experiences of childhood through research, service and outreach, and education.

The [Mid-Atlantic Regional Center for the Humanities](#) (MARCH) supports humanities research, programming, training, and communication throughout New Jersey, Pennsylvania, New York, Delaware, Maryland, and the District of Colombia.

The [Institute for Effective Education](#) advances research on the strategies and programs that promote best practices in education.

PUBLIC POLICY AND LAW

Critical matters of policy and law impacting lives in New Jersey and around the world are addressed by Rutgers–Camden through these academic centers.

The [Center for State Constitutional Studies at Rutgers-Camden](#) is an interdisciplinary institute dedicated to promoting public understanding of American state constitutions and of sub-national constitutions in other federal systems

The [Center for Urban Research and Education](#) promotes national research on urban issues while training the next generation of urban scholars.

The [Community Leadership Center](#), a grant-funded service and research center, helps revitalize urban communities through education, leadership, and community development.

The [Rutgers Institute for Information Policy and Law](#) studies the legal, economic, and cultural implications of information production, distribution, consumption, and regulation.

The [Institute for Law and Philosophy](#) works to advance knowledge and understanding of philosophically significant legal topics, both in normative legal theory and in analytical jurisprudence.

The [Senator Walter Rand Institute for Public Affairs](#) engages public, government, non-profit, and community stakeholders in addressing regional challenges.

The [Center for Government Compliance and Ethics](#) seeks to advance the application of effective ethics and compliance program principles as an element of public governance at the federal, state, and local levels in the United States and worldwide through a variety of activities including research, education, networking, and thought leadership.

SCIENCE

The next generation of innovation in the biosciences and other disciplines is being created at Rutgers–Camden by a talented team of faculty specializing in biology, chemistry, physics, mathematics, and computer science.

The [Center for Computational and Integrative Biology](#) emphasizes the development of mathematical models for biological systems and the application of the models to data from laboratory and field investigations.



Where in the World Is Rutgers

Rutgers' campuses are located in the great state of New Jersey, one of America's 13 original colonies. Packed with history, firsts—and people—it is where Washington crossed the Delaware, Edison invented the electric light, and the boardwalk and baseball were born. It is home to 8.7 million residents—the small but powerful sweet spot between New York and Pennsylvania. With its tremendous density and diversity—of terrain, communities, arts and culture, transportation, and businesses—New Jersey is now and future America in microcosm, the ideal proving ground for new ideas. And Rutgers has always been its trusted partner in moving forward.



New Jersey Weather and Time Zone

Visitors come to Rutgers from around the world, arriving on our campuses daily. We've provided information to help you plan your visit, whether you are coming next week, next month, or a year from now. How should you pack? Will it be cold or warm? What time will it be in New Jersey when you arrive? Find out below.

TEMPERATE

Average daily temperatures in New Jersey in January, usually the coldest month, are a high of 37°F (3°C) and a low of 24°F (-4°C). In July, usually the hottest month, daily temperatures reach an average high of 85°F (29°C) and a low of 67°F (19°C).

Measurable precipitation falls on about 120 days out of each year. Fall months are usually the driest. Snow may fall from about October 15 to April 30 in northern counties and from about November 15 to April 15 in southern counties.

RUTGERS TIME

Rutgers, like New York and Philadelphia, is in the Eastern Time Zone.

Eastern Standard Time (EST), UTC-5

- Begins first Sunday every November, 2 a.m.
- Is five hours behind UTC

Eastern Daylight Time (EDT), UTC-4

- Begins second Sunday every March, 2 a.m.
- Is four hours behind UTC

New Jersey Weather and Climate Network

A public service of the Office of the New Jersey State Climatologist at Rutgers University, the NJ Weather and Climate Network (NJWxNet) website is a one-stop destination for New Jersey weather and climate information. [Learn more.](#)



Who We Are

Rutgers, The State University of New Jersey, is a leading national research university and the state's preeminent, comprehensive public institution of higher education. Rutgers is dedicated to teaching that meets the highest standards of excellence; to conducting research that breaks new ground; and to providing services, solutions, and clinical care that help individuals and the local, national, and global communities where they live.

Founded in 1766, Rutgers teaches across the full educational spectrum: preschool to precollege; undergraduate to graduate; postdoctoral fellowships to residencies; and continuing education for professional and personal advancement.



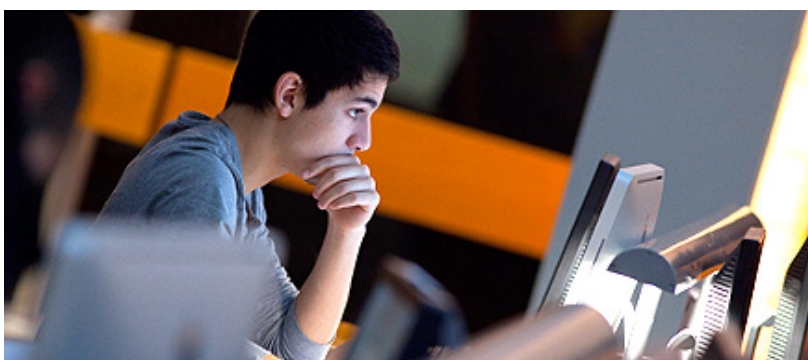
We Are Students More than 65,000 students from all 50 states and more than 115 countries—including 45,059 undergraduates and 20,267 graduate students—choose Rutgers for their education.



We Are Faculty and Staff Our more than 24,400 faculty and staff are at the heart of everything we do. Meet some of our [outstanding faculty members](#) and learn about their important work.



We Are Alumni Nearly 450,000 alumni—with about two-thirds in New Jersey—live and work in all 50 states and on six continents. The [Rutgers University Alumni Association](#) oversees all things alumni, including the [Rutgers Hall of Distinguished Alumni](#).



We Are Academics Our 33 schools and colleges bring rigor and creativity to [academic study](#), with the arts and sciences at the core of our academic excellence.

We Are Research Rutgers is one of the nation's leading comprehensive public [research](#) universities, with groundbreaking projects in areas as diverse as autism and oceanography. Rutgers researchers work on every continent, including Antarctica.



We Are Health Care With clinical trials, health sciences research, university-based patient care, and two medical schools and a dental school, Rutgers is dedicated to [education and innovations in health care](#).



We Are Service With impact around the corner and around the globe, Rutgers' service mission reaches throughout New Jersey and beyond, as exemplified by the activities of our [New Jersey Agricultural Experiment Station](#).



Rutgers is the sole university in the United States that is a colonial college, a land-grant institution, and a public university. The university draws on a storied legacy of innovation and strong ties to a complex and diverse state to serve the public through education, research, health care, and community engagement.

Rutgers Biomedical and Health Sciences

[Rutgers Biomedical and Health Sciences](#) is a major new health care education, research, and clinical division at Rutgers University.

Rutgers Locations

Our four campuses are located in New Brunswick, Newark, and Camden. We also have programs at additional locations across the state of New Jersey and around the world, from Atlantic City to Beijing.

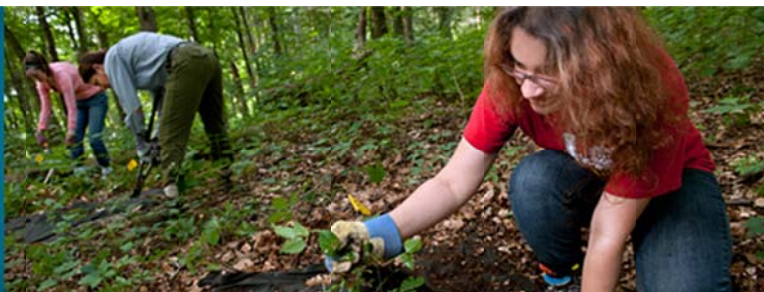
- [Our Campuses](#)
- [Additional Locations](#)

A Leading Research University

Rutgers is the only public university in New Jersey in the [Association of American Universities](#) (AAU).

Of the thousands of universities in North America, just 62 are AAU members, recognized for the quality and scope of their research and educational programs. Rutgers and Princeton are New Jersey's only AAU institutions.

Hard at Work



Additional Locations

Rutgers is The State University of New Jersey, which means we are busy and active throughout the state. Not only do we offer degree programs and courses at satellite campuses and other locations, but we also maintain business centers that nurture commerce and field stations that monitor our forests, meadowlands, and waters. At Rutgers, students and lifelong learners are provided with a diverse array of possibilities throughout the state.

Learning across New Jersey

Wherever you go in New Jersey, chances are Rutgers thinkers are at work nearby. Rutgers offers degree programs and courses at satellite campuses throughout the state.

Satellite Locations

Bachelor's in Hospitality Management: Atlantic City

M.B.A. Satellite Locations: Jersey City, Madison

Rutgers at Atlantic Cape Community College: Mays Landing

Rutgers at Brookdale Community College: Freehold

Rutgers at Camden County College: Blackwood

Rutgers at Raritan Valley Community College: North Branch

Rutgers at Mercer County Community College: West Windsor

School of Health Related Professions: Scotch Plains, Stratford

School of Nursing: Stratford

School of Public Health: Stratford

Joint Base McGuire-Dix-Lakehurst

International Presence

Rutgers is proud to be The State University of New Jersey, and proud to provide students with opportunities for educational enrichment and learning experiences around the globe.

Ensuring that our students are fully equipped to address the global challenges of our time is part of our university's mission of teaching, research, and service.

President Robert L. Barchi

International Programs

International Executive M.B.A. Program: Singapore

Executive MBA, China Experience: Beijing, Shanghai

International Service Learning

Koobi Fora Field School: Kenya

Rutgers Study Abroad Programs

School of Environmental and Biological Sciences Study Abroad Programs

The Rutgers Conservatory at Shakespeare's Globe: London, England

Engineers without Borders: Guatemala, Kenya, Thailand

Continuing Education

As a hub of lifelong learning, Rutgers provides an astonishing variety of continuing education programs for everyone from elementary school students to medical practitioners to state policymakers.

Cooperative Extension

With a presence in all 21 New Jersey counties, the Cooperative Extension brings Rutgers' knowledge to the homes, schools, farms, gardens, and offices of our state.

Field Stations and Research Facilities

There is an exceptionally wide array of marine, freshwater, and terrestrial ecosystems in New Jersey, with research field stations drawing scientists and visitors from around the world. Within a single day, one can visit and study habitats of barrier islands, coastal plains, the piedmont, Precambrian highlands, and ridge and valley geological provinces. Explore a sampling of our field stations and research facilities.

Field Stations and Research Facilities

Bivalve Laboratory: Port Norris, New Jersey

Pinelands Field Station: New Libson, New Jersey

Rutgers Agricultural Research and Extension Center: Bridgeton, New Jersey

Rutgers Plant Science Research and Extension Farm: Adelphia, New Jersey

Rutgers University Marine Field Station: Tuckerton, New Jersey

Business Resources

As technology and innovation are the keys that open the door to new business development, Rutgers people, programs, and processes support economic growth in New Jersey. Learn more about resources available to provide expertise and perform research in an effort to accelerate business innovation, development, and success.

Business Incubators

Food Innovation Center

Rutgers Camden Technology Campus

EcoComplex

New Jersey Small Business Development Centers

New Brunswick

Newark

Camden

Patient Care Locations

As New Jersey's premier university-based provider of health care, we have a presence throughout the state. Learn more. A sample of our care locations and practices:

Cancer Institute of New Jersey

Cardiovascular Institute of New Jersey

Center for Dental and Oral Health Faculty Practice

Environmental and Occupational Health Sciences Institute Clinical Center

Francois-Xavier Bagnoud Center Ambulatory Care Program

Newark Therapy Services

New Jersey Medical Group Faculty Practice

Robert Wood Johnson Medical Group

University Behavioral Health Care

Global Tuberculosis Institute Waymon C. Lattimore Practice

Serving New Jersey & Beyond

Rutgers is The State University of New Jersey—the state’s preeminent public research university. We work every day with the people of New Jersey to understand and solve our most pressing problems. Balancing development and open space? Improving K–12 education? Encouraging economic growth? If it concerns New Jersey, it concerns Rutgers. Learn more about how your state university is at your service in New Jersey and beyond.

At Your Service

Explore these resources and find out how Rutgers can make you, your community, family, or business stronger and wiser (and maybe even happier)!

Keeping the Garden State Green: Agriculture and Environment

As New Jersey’s land-grant university, Rutgers has a fundamental commitment to improving agricultural viability and environmental health in the nation’s most densely populated state.

- [Barnegat Bay Shellfish Restoration Program](#)
 - [Center for Energy, Economic, and Environmental Policy](#)
 - [Center for Green Building](#)
 - [Center for Turfgrass Science](#)
 - [Center for Urban Restoration Ecology](#)
 - [Center for Vector Biology](#)
 - [Climate and Environmental Change Initiative](#)
 - [Digital Meadowlands](#)
 - [EcoComplex](#)
 - [Harmful Plants Gallery](#)
 - [Highlands Regional Information System](#)
 - [Institute of Marine and Coastal Sciences](#)
 - [Jacques Cousteau National Estuarine Research Reserve](#)
 - [Lawn and Garden Resources](#)
 - [National Center for Neighborhood and Brownfields Redevelopment](#)
 - [New Jersey Agricultural Experiment Station](#)
 - [New Jersey Environmental Digital Library](#)
 - [New Jersey Highlands Water Protection and Planning Act](#)
 - [New Jersey State Climatologist](#)
 - [New Jersey Water Resources Research Institute](#)
 - [New Jersey Weed Gallery](#)
 - [Philip E. Marucci Center for Blueberry and Cranberry Research and Extension](#)
 - [Pinelands Field Station](#)
 - [Rutgers Cooperative Extension](#)
 - [Rutgers Energy Institute](#)
 - [Rutgers Gardens](#)
 - [Snyder Research and Extension Farm](#)
-

Top-Notch Arts and Entertainment (at Bargain Prices!)

To enrich the mind and spirit, Rutgers offers a year-round calendar of arts, culture, and entertainment events, programs, and exhibits. Find resources here.

- [Ag Field Day](#)
- [Institute on Ethnicity, Culture, and the Modern Experience](#)
- [Institute of Jazz Studies](#)
- [Institute for Women and Art](#)
- [Jane Voorhees Zimmerli Art Museum](#)
- [Kirkpatrick Choir](#)
- [Mason Gross School of the Arts](#)
- [National Arts Program Exhibit](#)
- [New Jersey Film Festival/Rutgers Film Co-op/New Jersey Media Arts Center](#)
- [New Jersey Folk Festival](#)
- [Paul Robeson Galleries](#)
- [Rutgers–Camden Center for the Arts](#)
- [Rutgers Day](#)
- [Rutgers Jazz Ensemble](#)
- [Rutgers-NJIT Theatre Arts Program](#)
- [Rutgers Jewish Film Festival](#)
- [Rutgers University Glee Club](#)
- [Rutgers Symphony Orchestra](#)
- [The Newark Metro](#)
- [Victoria J. Mastrobuono Theater](#)

Economic Engine: Business, Industry, and Workforce

As New Jersey's partner for a strong economy, Rutgers provides solutions that support economic growth and encourage new ventures based on fresh ideas and innovation.

- [Advance and Rutgers Report](#)
 - [Career Center, Camden](#)
 - [Career Services, New Brunswick](#)
 - [Career Development Center, Newark](#)
 - [Center for Advanced Food Technology](#)
 - [Center for Advanced Infrastructure and Transportation](#)
 - [Center for Management Development](#)
 - [Center for Organizational Development and Leadership](#)
 - [Center for Supply Chain Management](#)
 - [Center for Turfgrass Science](#)
 - [Center for Urban Entrepreneurship and Economic Development](#)
 - [Center for Women and Work](#)
 - [EcoComplex](#)
 - [Equine Science Center](#)
 - [Ernest Mario School of Pharmacy](#)
 - [Haskin Shellfish Research Laboratory](#)
 - [John J. Heldrich Center for Workforce Development](#)
 - [MBA Team Consulting Program](#)
 - [New Jersey Agricultural Experiment Station](#)
 - [New Jersey Center for Biomaterials](#)
-

-
- New Jersey Small Business Development Centers
 - Office of Technology Commercialization
 - Philip E. Marucci Center for Blueberry and Cranberry Research and Extension
 - Rutgers Business School–Newark and New Brunswick
 - Rutgers–Camden Technology Campus/Business Incubator
 - Rutgers–Camden Quarterly Business Outlook
 - Rutgers Economic Advisory Service
 - Rutgers Food Innovation Center
 - Rutgers Regional Report
 - School of Business–Camden
 - School of Business–Camden Executive Education
 - School of Engineering
 - School of Management and Labor Relations
 - Solutions from Rutgers
 - Division of Continuing Studies
 - University Inn and Conference Center
 - WINLAB for Wireless

Hitting Home: Community Engagement, Government, and Public Policy

Rutgers is New Jersey's go-to resource for objective data, analysis, and forecasting on issues that affect our everyday lives, from airport and bicycle safety to voting rights and government efficiency.

- Alan M. Voorhees Transportation Center
 - Center for American Women and Politics
 - Center for Government Services
 - Center for State Health Policy
 - Community Leadership Center
 - Center for Urban Policy Research
 - Center on Public Security
 - *Civic Engagement: Rutgers–Newark*
 - *Programs for the Community: Rutgers–New Brunswick*
 - *Civic Engagement: Rutgers–Camden*
 - Eagleton Institute of Politics
 - Edward J. Bloustein School of Planning and Public Policy
 - E-Governance Institute
 - Girl Scout Program Award
 - Institute for Ethical Leadership
 - Joseph C. Cornwall Center for Metropolitan Studies
 - National Center for Public Performance
 - New Jersey Bicycle and Pedestrian Resource Center
 - Police Institute
 - Rutgers Cooperative Extension
 - Rutgers University Dance Marathon
 - School of Law–Camden Pro Bono Programs
 - School of Law–Newark Public Advocacy Clinics
 - School of Public Affairs and Administration
 - Senator Walter Rand Institute for Public Affairs
-

Competitive Edge: Continuing Education and Lifelong Learning

New Jersey citizens access Rutgers' continuing education programs to stay ahead in the workplace and expand their intellectual horizons.

- [Division of Continuing Studies](#)
- [Center for Management Development](#)
- [Continuing Education at Rutgers–Newark](#)
- [Graduate School of Education Continuing Education](#)
- [New Jersey Agricultural Experiment Station Continuing Education](#)
- [Osher Lifelong Learning Institute](#)
- [Rutgers Advanced Technology Extension](#)
- [Rutgers University Library Services for New Jersey](#)
- [School of Social Work Continuing Education](#)
- [School of Environment and Biological Sciences Program in Science Learning](#)

From Franklinitite to the Electric Light: New Jersey History

Resources at Rutgers provide unique insights into New Jersey's history, from prehistoric times to recent decades.

- [Elizabeth Cady Stanton and Susan B. Anthony Papers Project](#)
- [Encyclopedia of New Jersey](#)
- [New Jersey Genealogy](#)
- [Geology Museum](#)
- [Governors of New Jersey](#)
- [Guide to Researching New Jersey History](#)
- [Institute of Jazz Studies](#)
- [New Jersey Digital Highway](#)
- [New Jersey Genealogy](#)
- [New Jersey Legislative History](#)
- [New Jersey Women's History](#)
- [Historical Maps and Images of New Jersey](#)
- [The Once and Future Newark with Dr. Clement Alexander Price](#)
- [Oral History Archives](#)
- [Rutgers University Library Services for New Jersey](#)
- [Rutgers University Press](#)
- [Sinclair New Jersey Collection](#)
- [Special Collections and University Archives](#)
- [Thomas Edison Papers](#)

Ready, Set, Learn: Pre-K–12 Education

From the reading-ready preschooler to the high school senior seeking advanced coursework to the school district adopting new curriculum standards, Rutgers research and outreach focuses on the entire youth education continuum.

- [Academic Foundations Center](#)
 - [The Academy at Rutgers for Girls in Engineering and Technology \(TARGET\)](#)
 - [Adventure Camp](#)
-

-
- Art Camp
 - Art Classes for Children
 - Big Buddy
 - BizEd: A Leadership Program for High School Students
 - Center for Children and Childhood Studies
 - Center for Effective School Practices
 - Center for Mathematics, Science, and Computer Education
 - Center for Strategic Urban Community Leadership
 - Consortium for Pre-College Education in Greater Newark
 - C.O.O.L (Coastal Ocean Observation Laboratory) Classroom for Marine Sciences
 - Dance Classes for Children
 - Douglass Developmental Disabilities Center (Autism Spectrum)
 - Douglass Project for Rutgers Women in Math, Science, and Engineering
 - Douglass Psychology Child Study Center Preschool
 - Early Learning Research Academy (ELRA)
 - EconKids: Resources for Teaching Economics to Children
 - 4-H Program
 - Girl Scout Program Award
 - Graduate School of Education
 - Infancy Studies Laboratory
 - LEAP Academy University Charter School
 - Lindley G. Cook 4-H Camp
 - Mason Gross School of the Arts
 - Mason Gross School of the Arts Preparatory School
 - Math and Science Learning Center
 - Music and Vocal Classes for Children
 - Music Together® for Infants and Young Children
 - National Institute for Early Education Research
 - New Horizons Summer Day Camp
 - New Jersey Governor's School of Engineering and Technology
 - Nutritional Sciences Preschool
 - Parents Academy for School Reform
 - Reading Skills Program
 - Rutgers–Camden Center for the Arts
 - Rutgers Children's Choir
 - Rutgers Future Scholars
 - Rutgers–New Brunswick Recreation Programs for Children, Families, and the General Public
 - Rutgers Science Explorer (Traveling Science Lessons)
 - SPARC (Science Preparation Alliance of Rutgers and Camden)
 - Summer Sports Camps
 - Thomas Edison Papers
 - Upward Bound
 - Video Mosaic Collaborative
 - Waksman Student Scholars Program in Molecular Biology
 - We the People: The Citizen and the Constitution
 - World Languages Institute
 - Young Scholars Program in Discrete Mathematics
-

To Your Health: Public Health, Safety, and Nutrition

Rutgers helps New Jerseyans adopt behaviors, policies, and practices that promote safety, good health, and nutrition.

- Cancer Institute of New Jersey
- Center of Alcohol Studies
- Center for Gambling Studies
- Center for State Health Policy
- Center for Vector Biology
- Center on Violence Against Women and Children
- College of Nursing
- Command, Control, and Interoperability Center for Advanced Data Analysis (CCICADA)
- Community Health Programs at Rutgers Biomedical and Health Sciences
- Disaster Preparedness
- Edward J. Bloustein School of Planning and Public Policy
- Environmental and Occupational Health Sciences Institute
- Ernest Mario School of Pharmacy
- Expanded Food and Nutrition Education Program (EFNEP)
- Get Moving - Get Healthy New Jersey
- Graduate School of Applied and Professional Psychology
- Food Allergies
- Food Stamp New Jersey Supplemental Nutrition Assistance Program–Education (NJ SNAP–ED)
- Harmful Plants Gallery
- HIV Prevention
- Insect-Borne Disease
- Institute for Families
- Institute for Health, Health Care Policy, and Aging Research
- Memory Disorders Project
- Memory Loss and the Brain Newsletter
- New Jersey Collaborating Center for Nursing
- New Jersey Medical School
- New Jersey Obesity Group
- Pest Management
- Psychological Services
- Robert Wood Johnson Medical School
- Rutgers Cooperative Extension
- Rutgers Against Hunger
- Rutgers/LEAP Health Center
- Rutgers School of Dental Medicine
- School of Nursing
- School of Nursing–Camden
- School of Social Work
- Seafood Safety
- Sex Education for Teens (Answer)
- Smoking Cessation Laboratory
- Spinal Cord Injury CareCure Community
- Transportation Safety Resource Center

A Well-Informed Citizenry: Science for the Public

With Rutgers' help, New Jerseyans are more science-savvy and better equipped to make good decisions for themselves, their families, and communities.

- Citizen Science
- Climate and Environmental Change Initiative
- Coastal Ocean Observation Laboratory (COOLroom)
- Faraday Children's Christmas Physics Lecture
- Rutgers/New Jersey Geological Survey Core Repository
- Geology Museum
- Invasive Plant Monitoring
- Jacques Cousteau National Estuarine Research Reserve
- New Jersey Agricultural Experiment Station
- Office of the New Jersey State Climatologist
- Physics and Astronomy Outreach
- Robert A. Schommer Astronomical Observatory
- Rutgers Science Explorer (Traveling Science Lessons)

Older, Smarter, Wiser: Senior Citizen Services

Many free and low-cost services help New Jersey senior citizens access a range of health, cultural, and educational programs at Rutgers.

- ArtMoves: Mobile Art Gallery Educational Outreach Program
- Center for Exercise and Aging
- Identity Theft Resolution Center
- Institute for Health, Health Care Policy, and Aging Research
- Mason Gross School of the Arts Discount Tickets
- Memory Disorders Project
- Oral History Archives
- Osher Lifelong Learning Institute
- Senior Citizen Course Audit Program
- Tax Preparation Assistance

We've Got Game: Sports/Recreation

Whether it's tennis lessons for the kids, yoga to relieve stress, or a rousing football game with thousands of screaming fans, Rutgers sports and recreation programs keep you in the game.

- Rutgers Football
 - Rutgers–New Brunswick Recreation Programs for Children, Families, and the General Public
 - Scarlet Knights
 - Scarlet Raiders
 - Scarlet Raptors
 - Summer Sports Camps
 - Youth Sports Research Council
-

Raising Money to Combat Hunger



Rutgers students from across the university are helping to raise money and collect food for the hungry with Rutgers Against Hunger. They're baking pies, collecting cans of food, and even heading out to farms to glean collard greens, mustard greens, and turnips from the fields. [Learn more.](#)



Explore the World We Have to Offer

Visit Rutgers

Historic campus quads. Bustling urban plazas. Advanced science centers. Lush farms and animal pastures. Parks, forests, and ornamental gardens. Playing fields, arenas, and stadiums. Libraries, museums, and galleries. Performing arts centers. The mastodon. The mummy.

Featured Destination: Jane Voorhees Zimmerli Art Museum



The [Jane Voorhees Zimmerli Art Museum](#) houses more than 60,000 works, including American, European, Japanese, and Russian art. The museum's Norton and Nancy Dodge Collection of Nonconformist Art from the Soviet Union is the largest collection of its kind outside of Russia.

Located on Rutgers' New Brunswick Campus, the Zimmerli is midway between New York City and Philadelphia and just a short walk from the New Jersey Transit train station.

Many fine restaurants and eateries are close by. Current exhibitions include [In the Search of an Absolute: Art of Valery Yurlov](#), an exhibition of the works of this early Soviet nonconformist. Plan your visit.

Newark

For 100 years, Rutgers–Newark and the City of Newark have shared a rich history. Today, Rutgers is one of the most culturally and academically rich public universities in the nation. And, Newark is home to Fortune 100s, top law firms, medical centers, and more.

- **New Brunswick**

New Brunswick has a colonial past and a powerful presence in business, health care, education, and the arts. Home to major teaching hospitals and headquarters of Johnson & Johnson, the city sits between NYC and Philadelphia. By train—just two blocks from campus—either city is an hour away.

- **Camden**

Just across the river from Philadelphia, Rutgers–Camden is a small, friendly campus with green spaces, gardens, and Victorian to modern architecture. The campus is located in the Camden Waterfront District.

It's all at Rutgers. It's all in New Jersey. And it's all close to New York City and Philadelphia. Are we there yet?

Spend an afternoon, a weekend, a summer, a college career, a lifetime. [Visit our campuses](#) in New Brunswick, Newark, and Camden and discover that there is always more to explore at Rutgers, The State University of New Jersey.

Campus Information Services for Visitors

Rutgers is a big, dynamic place. On any given day, our campuses are alive with events and activities. In planning your visit, you may have specific questions about logistics, timing, contacts, and parking—anything at all. Campus Information Services is your go-to source for all things Rutgers.

You can call 732-445-INFO (4636) to speak to an information specialist or [ask your question online](#).

Attractions & Destinations







•



•



•

The Institute of Jazz Studies, Newark

Attractions & Destinations

Rutgers has a wealth of enlightening and engaging attractions and destinations for visitors of all ages. Whether it's stargazing or deep-sea exploration, jazz or chamber music, visual arts or gardening, the State University of New Jersey is involved and likely breaking new ground. It's a place to delve into history as well as catch a glimpse of the future, and the things to see and do here are as diverse as our student body and the vibrant cultural areas we call

home. Convenient to New York City, Philadelphia, and the Jersey Shore, our campuses are probably right along your way.

The Gateway



“An entrance should make a strong, incisive statement because it creates the first impression,” artist Clyde Lynds says of the aptly named Gateway in Camden.

Located at Fourth and Cooper streets, the Gateway is two 10-foot high, glass panel walls that marks a transition from the city to the Camden Campus. At night, all 23 glass panels, etched with illustrations of prominent moments in civilization, are illuminated, highlighting an additional sculpture made of concrete, fiber optics, and glass that features a display of flickering light.

The \$1 million project, installed in September 2007, helped transform an underutilized street into a pedestrian-only green space. [Learn more.](#)

Three Great Destinations

Only at Rutgers

For a singular experience in New Jersey, try any of these terrific Rutgers attractions. Whether it's an unusual collection of American hollies, a new exhibit featuring a century of American woodcuts, or Miles Davis's trumpet, you'll find something exciting and leave these destinations feeling enlightened and refreshed.

50 acres are yours to explore at the [Rutgers Gardens](#), a world of flowering trees, shrubs, annuals, and perennials on the outskirts of the George H. Cook Campus in New Brunswick. The largest bamboo forest in New Jersey is just one of many gems to discover at the Rutgers Gardens.

17,000 works make up the foremost collection of dissident art from the former Soviet Union. The collection is the centerpiece of the [Jane Voorhees Zimmerli Art Museum](#) at Rutgers–New Brunswick, one of the finest university museums of art in the nation.

100,000 recorded works of jazz are housed at the world-renowned [Institute of Jazz Studies](#) at Rutgers–Newark. With its more than 100 distinct archival collections, the institute was called “one of world's treasures” by renowned documentary filmmaker Ken Burns who tapped its collections in making his PBS series, *Jazz*.

EXPLORE RUTGERS

The lists below provide information, events, and points of interest for visitors in [New Brunswick](#), [Newark](#), and [Camden](#).

. Arts & Culture

New Brunswick

- Mason Gross School of the Arts
- Jane Voorhees Zimmerli Art Museum
- Brodsky Center for Innovative Editions
- Rutgers Day
- New Jersey Folk Festival
- The Rutgers Film Co-op/New Jersey Media Arts Center
- Asian American Cultural Center
- Center for Latino Arts & Culture
- Paul Robeson Cultural Center
- Bookstores

Newark

- Newark Museum
- Newark Landmarks
- Paul Robeson Galleries
- Rutgers–NJIT Theatre Arts Program
- New Jersey Performing Arts Center (NJPAC)

Camden

- Rutgers–Camden Center for the Arts
- Mid-Atlantic Regional Center for the Humanities (MARCH)
- The Gateway

. Science & Nature

New Brunswick

- Geology Museum
- Rutgers Gardens
- Robert A. Schommer Astronomical Observatory
- Rutgers Day
- Ag Field Day
- Hutcheson Memorial Forest

Newark

- Branch Brook Park

Camden

- [Adventure Aquarium](#)
- [Johnson Park](#)

. Architecture & History

New Brunswick

- [Mason Gross Memorial](#)
- [Old Queens and College Avenue Campus \[PDF\]](#)

Newark

- [Ballantine House](#)
- [New Jersey Historical Society](#)

Camden

- [Johnson Park](#)

. Library Collections of Interest

New Brunswick

- [Special Collections and University Archives](#)
- [East Asian Library](#)

Newark

- [Institute of Jazz Studies](#)

. Athletics & Recreation

New Brunswick

- [Scarlet Knights](#)
- [Rutgers University Golf Course](#)
- [Rutgers Recreation Public Programs](#)

Newark

- [Scarlet Raiders](#)
- [Bears and Eagles Riverfront Stadium](#)

Camden

- [Scarlet Raptors](#)
- [Camden Riversharks](#)

Rutgers, The State University of New Jersey

Institutional Profile Report

Section I

Major Capital Projects



STATUS OF SIGNIFICANT PROJECTS

JUNE 2013

UNIVERSITY FACILITIES & CAPITAL PLANNING

ANTONIO CALCADO
VICE PRESIDENT

JEFF LIVINGSTON
UNIVERSITY ARCHITECT

JOHN SHULACK
SENIOR EXECUTIVE DIRECTOR

PROJECT OVERVIEW

LIVINGSTON

1	7 Kilmer Road	3.5 million	Page 1
2	Business School	85 million	Page 1
3	Infrastructure Improvement Projects	10 million	Page 2
4	Tillett Classroom Project	13.5 million	Page 2

BUSCH

5	Wright Riemen Chemistry & Chemical Biology Building	115 million	Page 3
6	Ernest Mario School of Pharmacy, William Levine Hall Building Addition	37.5 million	Page 3

COLLEGE AVENUE

7	Seminary & Associated Property Development	295 million	Page 4
---	--	-------------	--------

COOK

8	Institute for Food, Nutrition and Health	55 million	Page 4
---	--	------------	--------

DOUGLASS

9	Nicholas Music Center Expansion	12.5 million	Page 5
---	---------------------------------	--------------	--------

CAMDEN

10	Alumni House & Development Office	2.5 million	Page 5
11	Writers House	4.5 million	Page 6
12	Nursing/Science Building	62.5 million	Page 6

NEWARK

13	Graduate Student Housing at 15 Washington Street	71 million	Page 7
14	Life Sciences Building	59 million	Page 8

COMPLETED PROJECTS

			Month and Year Completed
BUSCH CAMPUS			
1	Biomedical Engineering Building	33.5 million	9/06
2	Keck Neuroscience Center	2.4 million	9/07
3	Wright Rieman Polymer & Protein Wet Lab, Room 371	3 million	9/07
4	Stadium Expansion	102 million	9/09
5	University Visitor Center	7.54 million	9/09
6	Brown Welcome Pavilion & Football Recruiting Lounge	4.875 million	1/10
7	Cell DNA Repository	3.75 million	9/10
8	University Housing	57 million	9/11
9	Center for Integrative Proteomics Research	47 million	10/11
10	Nelson Biology Laboratories C-Wing Renovation	10.8 million	1/13
CAMDEN CAMPUS			
11	Camden Dining Hall Renovation	5.3 million	9/07
12	Camden Law School	37 million	3/09
13	Camden Recreation Center	12 million	9/09
14	Early Learning Research Academy (ELRA)	3.9 million	9/11
15	Camden Student Housing Project	55 million	9/12
CAPE MAY COUNTY			
16	Multi-Species Aquaculture Demonstration Facility	7.8 million	9/06
COLLEGE AVENUE CAMPUS			
17	College of Nursing	10 million	3/08
18	Student Counseling Center	5 million	9/09
19	Institute for Health Sciences	25 million	9/10
20	Gateway Transit Village	19.6 million	9/12

COMPLETED PROJECTS

			Month and Year Completed
COOK			
21	Endocrine Research Facility	4.5 million	3/08
CUMBERLAND COUNTY			
22	Food Innovation Center	7.65 million	6/08
DOUGLASS			
23	Douglass Developmental Disabilities Center	4 million	10/08
LIVINGSTON CAMPUS			
24	Livingston Solar Energy Project	10 million	4/09
25	Livingston Student Center	18.2 million	1/10
26	Livingston Dining Commons	30.5 million	9/11
27	University Housing	215 million	9/12
28	Solar Canopy Project	40.8 million	1/13
NEWARK CAMPUS			
29	Rutgers Business School	83 million	9/09
30	Life Sciences - Olson Hall	5.36 million	9/10
31	Central Heating Plant Upgrade	3.7 million	1/12
OUTLYING AREA			
32	Atlantic Cape Community College Facility	7.5 million	9/12
UNIVERSITY UTILITIES			
33	High Voltage Substation Upgrade: Phase 1	10.5 million	8/09
34	Interior Lighting Retrofit Program	5 million	11/10
35	High Temp Hot Water Improvements	8 million	2/11



University Facilities & Capital Planning

JUNE 2013

SIGNIFICANT PROJECTS

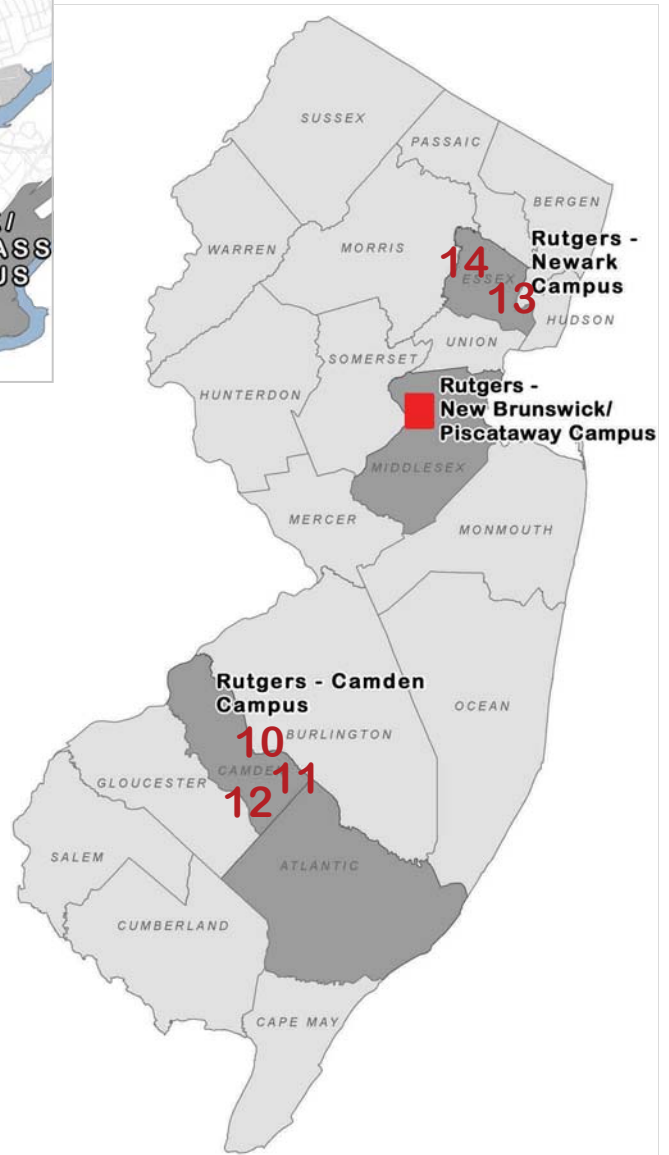
COMPLETED PROJECTS

			Month and Year Completed
CAMPUS WIDE			
36	Classroom Enhancement	15 million	2 / 11

POSTPONED PROJECTS

1	College Avenue Greening—Phase 1	17 million	
---	---------------------------------	------------	--

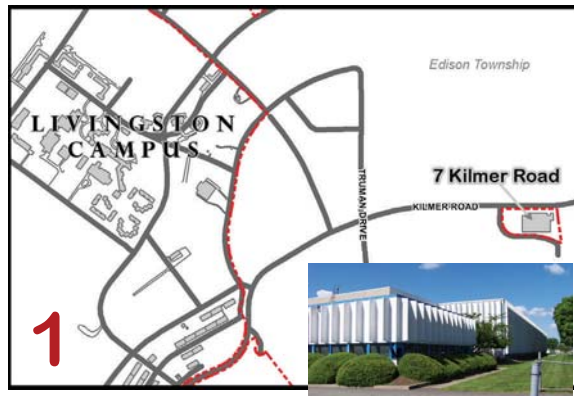
PROJECT LOCATIONS



LIVINGSTON

1 7 KILMER ROAD

- ◆ This project represents the renovation of a newly acquired 90,000 square foot warehouse located in Edison, NJ, adjacent to the Livingston Campus.
- ◆ The renovation will include the replacement of roof and internal fit-out, to prepare the property for records storage.
- ◆ Construction underway, 80% complete.



DATA

Budget: 3.5 Million
 Design: Design/Build
 Construction: February 2012 - July 2013

KEY DATES

Concept Document: December 2011
 Schematic Design: Not Applicable
 Bid Award: Not Applicable

CONSTRUCTION STATUS

Budget: On Budget
 Schedule: Schedule Adjusted
 Scope: No Change

2 BUSINESS SCHOOL

- ◆ Construction of a new 143,000 gross square foot iconic facility at the gateway entrance to the Livingston Campus. The complex will include classrooms, instructional labs, meeting rooms, offices and a trading floor.
- ◆ This facility will accommodate up to 3,200 undergraduates enrolled in the new 4-year business program in New Brunswick as well as graduate students.
- ◆ Construction underway, 75% complete.



DATA

Budget: 85 Million
 Design: June 2010 - July 2011
 Construction: October 2011 - August 2013

KEY DATES

Concept Document: April 2010
 Schematic Design: November 2010
 Bid Award: October 2011

CONSTRUCTION STATUS

Budget: On Budget
 Schedule: On Schedule
 Scope: No Change

LIVINGSTON

3 INFRASTRUCTURE IMPROVEMENT PROJECTS

- ◆ These projects represent a variety of infrastructure work required to support the ongoing transformation of the Livingston Campus into a center for graduate and professional studies.
- ◆ Projects include replacement and upgrades to roadways, sidewalks, landscaping, water mains, sanitary and storm sewer systems and high temperature water lines.
- ◆ Construction underway.

DATA

Budget: 10 Million
 Design: Design/Build
 Construction: June 2011 - September 2013

KEY DATES

Concept Document: June 2011
 Schematic Design: Not Applicable
 Bid Award: On-Going

CONSTRUCTION STATUS

Budget: On Budget
 Schedule: On Schedule
 Scope: No Change

4 TILLET CLASSROOM PROJECT

- ◆ The project represents the renovation and transformation of over 34,600 square feet of obsolete space in Tillet Hall located on the Livingston Campus.
- ◆ The newly transformed space will include 16 new lecture rooms and classrooms, computer labs, academic support offices, as well as a renovated campus post office. This project will add 1,400 new classroom seats to the campus and will include extensive upgrades to the 45 year old building's mechanical systems.
- ◆ Construction underway, 85% complete.

DATA

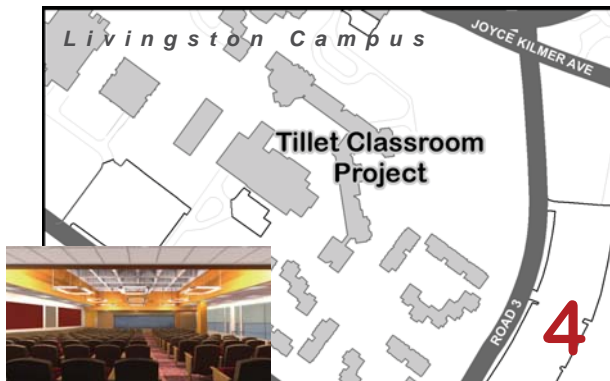
Budget: 13.5 Million
 Design: July 2011 - August 2012
 Construction: November 2012 - July 2013

KEY DATES

Concept Document: April 2012
 Schematic Design:
 Bid Award: December 2012

CONSTRUCTION STATUS

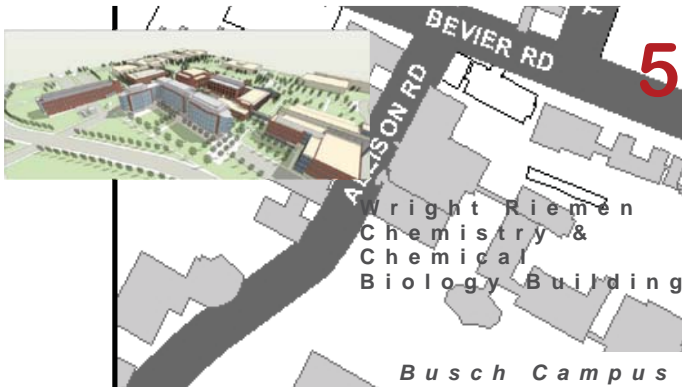
Budget: On Budget
 Schedule: On Schedule
 Scope: No Change



BUSCH

5 WRIGHT RIEMEN CHEMISTRY & CHEMICAL BIOLOGY BUILDING

- ◆ Establish a world-class state-of-the art Chemistry and Chemical Biology facility to serve and train the next generation of globally-engaged scientists and support the needs of the chemical industry in New Jersey and beyond.
- ◆ This facility will feature flexible research laboratory areas for teaching/teaching support, classrooms and collaborative and administration space.
- ◆ Design underway.



DATA

Budget: 115 Million
 Design:
 Construction:

KEY DATES

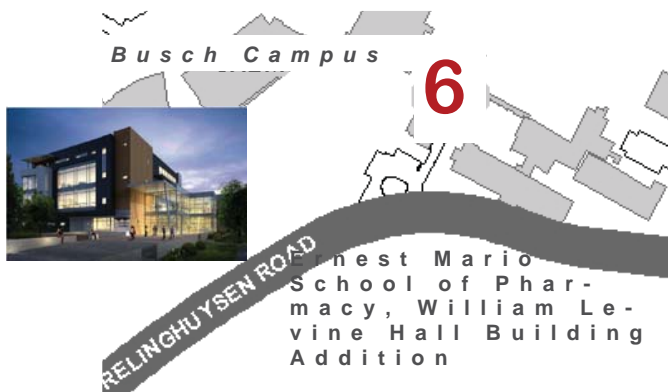
Concept Document: May 2013
 Schematic Design:
 Bid Award:

CONSTRUCTION STATUS

Budget:
 Schedule:
 Scope:

6 ERNEST MARIO SCHOOL OF PHARMACY, WILLIAM LEVINE HALL BUILDING

- ◆ The project represents a state of the art addition to the existing William Levine Hall Building that will feature classroom and lecture space.
- ◆ The space will house two 300 seat auditoriums, two collaborative practice simulation laboratories (community practice and hospital settings), administrative pharmacy practice space as well as labs for basic research in the pharmaceutical and biomedical sciences.
- ◆ Design firm selection underway.



DATA

Budget: 37.5 Million
 Design:
 Construction:

KEY DATES

Concept Document: April 2013
 Schematic Design:
 Bid Award:

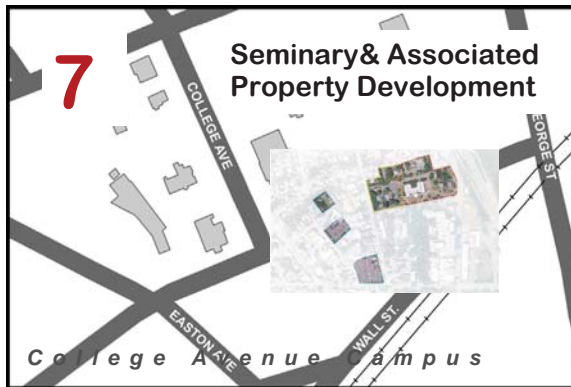
CONSTRUCTION STATUS

Budget:
 Schedule:
 Scope:

COLLEGE AVENUE

7 SEMINARY & ASSOCIATED PROPERTY DEVELOPMENT

- ◆ Redevelopment of the Seminary Property to include a Residential Honors College, School of Arts & Sciences signature Academic Building, development of Lot 8 to include university housing & rental and the construction of parking.
- ◆ Design underway.



DATA

Budget: 295 Million
 Design: _____
 Construction: _____

KEY DATES

Concept Document: _____
 Schematic Design: _____
 Bid Award: _____

CONSTRUCTION STATUS

Budget: _____
 Schedule: _____
 Scope: _____

COOK

8 INSTITUTE FOR FOOD, NUTRITION AND HEALTH

- ◆ Construction of a new facility for this institute, located on the Cook Campus, comprising of 78,000 sq. ft.
- ◆ This facility will focus on the study of cardio-inflammatory disease, cancer and obesity and will contain state-of-the-art laboratories, community clinics, a children's nutrition center and preschool as well as a dining facility offering health food options.
- ◆ Construction started.



DATA

Budget: 55 Million
 Design: January 2012 - December 2012
 Construction: April 2013 - April 2015

KEY DATES

Concept Document: February 2012
 Schematic Design: January 2012
 Bid Award: _____

CONSTRUCTION STATUS

Budget: _____
 Schedule: _____
 Scope: _____

DOUGLASS

9 NICHOLAS MUSIC CENTER EXPANSION

- ◆ Construction of a new wing on the Nicholas Music Center, located on the Douglass Campus, consisting of 23,668 sq. ft.
- ◆ The new wing will include a new hall for choral performances, dance studios, music practice rooms, offices for faculty and staff, and a multi-level atrium space that will serve as a gathering location for faculty, students and visitors.
- ◆ Construction underway, 95% complete.



DATA

Budget: 12.5 Million
 Design: June 2011 - December 2011
 Construction: March 2012 - July 2013

KEY DATES

Concept Document: June 2011
 Schematic Design: Not Applicable
 Bid Award: February 2012

CONSTRUCTION STATUS

Budget: On Budget
 Schedule: On Schedule
 Scope: No Change

CAMDEN

10 ALUMNI HOUSE & DEVELOPMENT OFFICE

- ◆ Renovation and restoration of 312 Cooper Street, the former Red Cross Building, built in the early 19th century and is located within the Cooper Street Historical district. This space will be occupied by the Alumni Development Office and consists of 8,015 sq. ft. An 1,150 sq. ft. addition includes an elevator and stairs.
- ◆ The renovated space will include Alumni meeting rooms and offices and space for the Alumni Development Office.
- ◆ Design and analysis underway.



DATA

Budget: 2.5 Million
 Design: March 2013-September 2013
 Construction: January 2014 - August 2014

KEY DATES

Concept Document: December 2012
 Schematic Design: Not Applicable
 Bid Award: Not Applicable

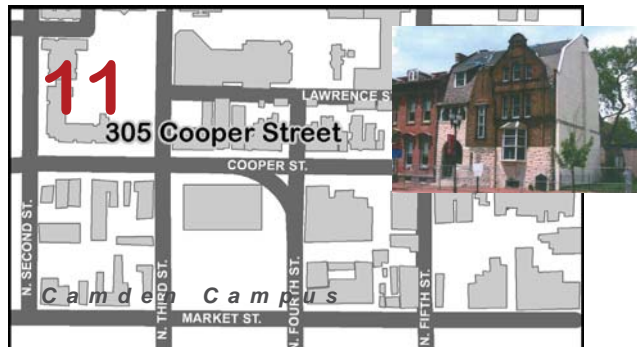
CONSTRUCTION STATUS

Budget:
 Schedule:
 Scope:

CAMDEN

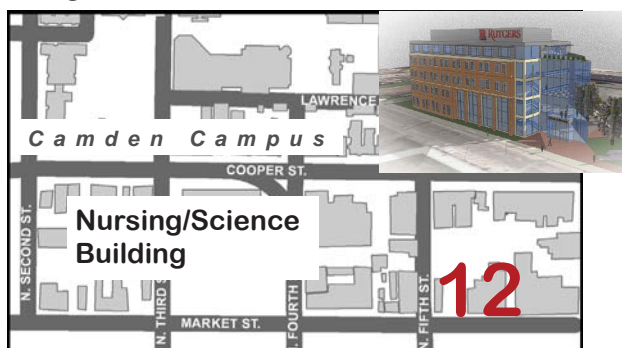
11 WRITERS HOUSE

- ◆ The renovation of 305 Cooper Street, the Henry Genet Taylor House, built in 1885 and currently on the National Register of Historic Properties, includes a renovation to the existing 6,685 sq. ft. as well as a 4,320 sq. ft. addition to the building that will include stairs, elevator and offices. This space will be occupied by the Department of English.
- ◆ The renovated space will provide students, faculty and guest writers the opportunity to gather and discuss literature and scholarly projects. As well, this project will provide a mechanism for the Masters in Fine Arts in Creative Writing to develop into a premier graduate program in southern New Jersey.
- ◆ Design and analysis underway.



12 NURSING/SCIENCE BUILDING

- ◆ This project, the construction of a new facility will have state-of-the-art teaching spaces that are consistent with the current pedagogical trends in Nursing and Science education.
- ◆ This facility will feature specialized simulation spaces for advanced teaching and SCALE-UP “Discovery Labs”. Shared student areas between Nursing and Science include student lounges, a food service area, group study rooms and collaboration spaces.
- ◆ Design firm selection underway.



DATA

Budget: 4.5 Million
 Design: March 2013 - April 2013
 Construction: May 2014 - August 2015

KEY DATES

Concept Document: December 2012
 Schematic Design: Not Applicable
 Bid Award: Not Applicable

CONSTRUCTION STATUS

Budget:
 Schedule:
 Scope:

DATA

Budget: 62.5 Million
 Design:
 Construction:

KEY DATES

Concept Document: April 2013
 Schematic Design:
 Bid Award:

CONSTRUCTION STATUS

Budget:
 Schedule:
 Scope:

Newark Projects Updates are prepared by the Office of the Chancellor, Newark Campus

NEWARK

SIGNIFICANT PROJECTS

13 GRADUATE STUDENT HOUSING AT 15 WASHINGTON STREET

- ◆ This project involves the conversion of 15 Washington St. into a mixed use residence to house 350 graduate students on the Newark Campus.
- ◆ Features include “apartment-style” living units, configured as studios, one, two, three and four bedroom units. Additionally, there will be common and study areas, and laundry facilities available. This project will also provide the first large lecture hall on campus. A 24 hour, 365 days per year security/service desk will be staffed in the building.
- ◆ Completed Schematic Design Phase in December 2012. Successfully met with DCA for project and code review. Application is underway for the State Historic Preservation. During Schematic Phase, cost estimate of construction was way over budget. A new cost estimating firm was brought in and the budget was brought down by adjustment of the base scope of work. All non-housing programs will not be in the base scope of work, and are being designed as Add Alternates (i.e. 600 Seat Lecture Hall, administrative offices of various departments, etc). The Add Alternates items will be carried through to bidding in order to test the marketplace’s ability to deliver as much value for the project as possible, and to give the University as much flexibility as possible in procuring project scope.
- ◆ Design underway.

DATA

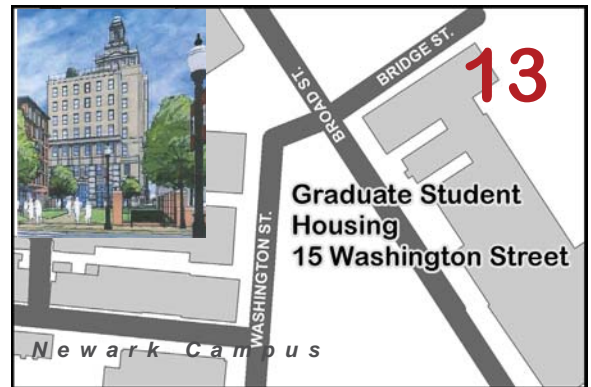
Budget: 71 Million
 Design: March 2012 - August 2013
 Construction: December 2013 - August 2015

KEY DATES

Concept Document: February 2012
 Schematic Design: December 2012
 Bid Award:

CONSTRUCTION STATUS

Budget:
 Schedule:
 Scope:



14 LIFE SCIENCES BUILDING

- ◆ This project creates a Life Sciences Center that physically links existing facilities and provides opportunities for synergy among all Life Science departments by creating shared cored functions, flexible research space for both existing and potential future programs and academic support spaces for all disciplines.
- ◆ Features include the expansion of the imaging suite and vivarium facilities. This building will be occupied by the Biology, Chemistry and Neuroscience departments.
- ◆ Design firm selection underway.

DATA

Budget: 59 Million

Design:

Construction:

KEY DATES

Concept Document: April 2013

Schematic Design:

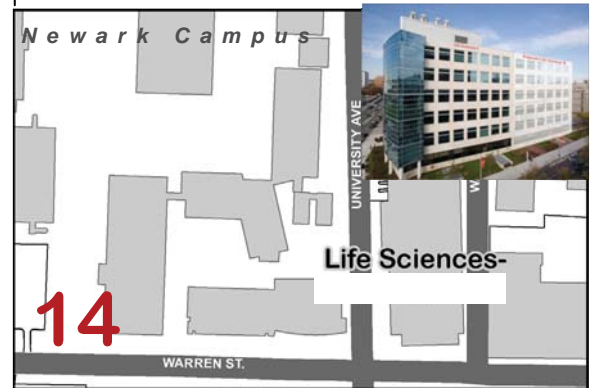
Bid Award:

CONSTRUCTION STATUS

Budget:

Schedule:

Scope:



Rutgers, The State University of New Jersey

Institutional Profile Report

2013

(September 16, 2013)